

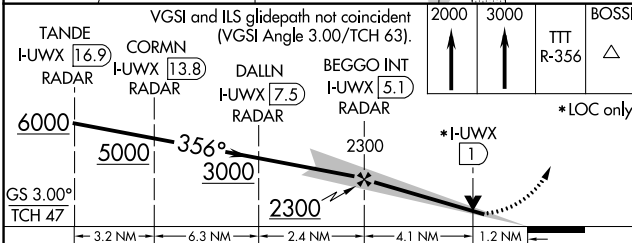
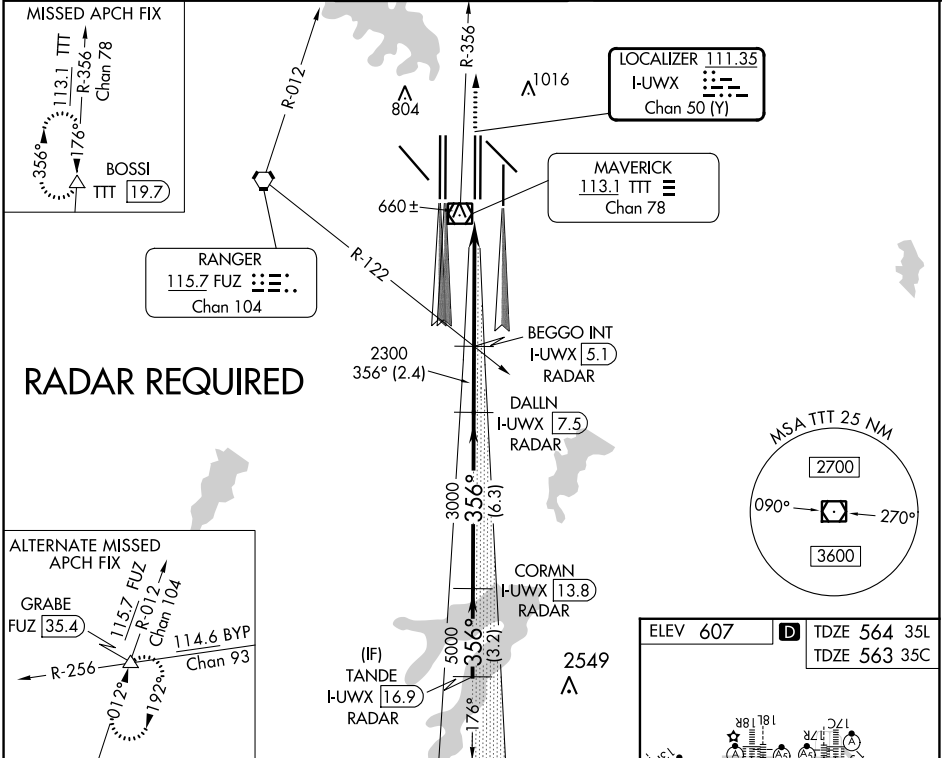
LOC/DME I-UWX <b>111.35</b> Chan <b>50</b> (Y)	APP CRS <b>356°</b>	Rwy 35L Idg <b>13400</b> TDZE <b>564</b> Apt Elev <b>607</b>	Rwy 35C Idg <b>13400</b> TDZE <b>563</b> Apt Elev <b>607</b>
--	------------------------	--	--

# ILS or LOC RWY 35L

DALLAS-FORT WORTH INTL (DFW)

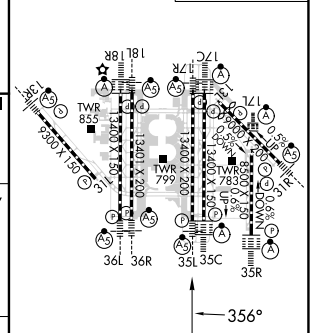
DME or RADAR required. Simultaneous approach authorized with Rwy 36 L/R and Rwy 35R. Inop table does not apply to Sidestep Rwy 35C.	Rwy 35L MALS 	Rwy 35C ALS-F-2 	MISSED APPROACH: Climb to 2000 then climb to 3000 on TTT VOR/DME R-356 to BOSSI/TTT 19.7 DME and hold.

D-ATIS ARR <b>123.775</b> DEP <b>135.925</b>	REGIONAL APP CON <b>127.075</b>	DFW TOWER <b>126.55 127.5</b> EAST <b>124.15 134.9</b> WEST	GND CON <b>121.65 121.8</b> EAST <b>121.85</b> WEST	CLNC DEL <b>128.25</b>	CPDLC
--	------------------------------------	---	---	---------------------------	-------



TAND E I-UWX <b>16.9</b> RADAR CORMN I-UWX <b>13.8</b> RADAR DALLN I-UWX <b>7.5</b> RADAR BEGGO INT I-UWX <b>5.1</b> RADAR	2000 3000 TTT R-356 BOSSI $\Delta$
6000 5000 3000 2300 GS 3.00° TCH 47 *I-UWX 1 *LOC only	
CATEGORY A B C D	
S-ILS 35L 764/18 200 (200-1/2)	
S-LOC 35L 1000/24 436 (400-1/2) 1000/40 436 (400-3/4)	
SIDESTEP 35C 1000-1 437 (400-1) 1000-1 1/2 437 (400-1 1/2) 1000-2 437 (400-2)	

ELEV 607	<b>D</b> TDZE 564 35L
	TDZE 563 35C



HIRL all Rwys	
REIL Rwys 13L and 31L	
TDZ/CL all Rwys except 13L, and 31L	
FAF to MAP 5.3 NM	
Knots	60 90 120 150 180
Min:Sec	5:18 3:32 2:39 2:07 1:46

SC-2, 22 FEB 2024 to 21 MAR 2024

SC-2, 22 FEB 2024 to 21 MAR 2024