

EMMYS EIGHT DEPARTURE (RNAV)
(EMMYS8,ZIRKL) 17JUN21DENVER, COLORADO
DENVER INTL (DEN)

NOTE: DME/DME/IRU or GPS required.

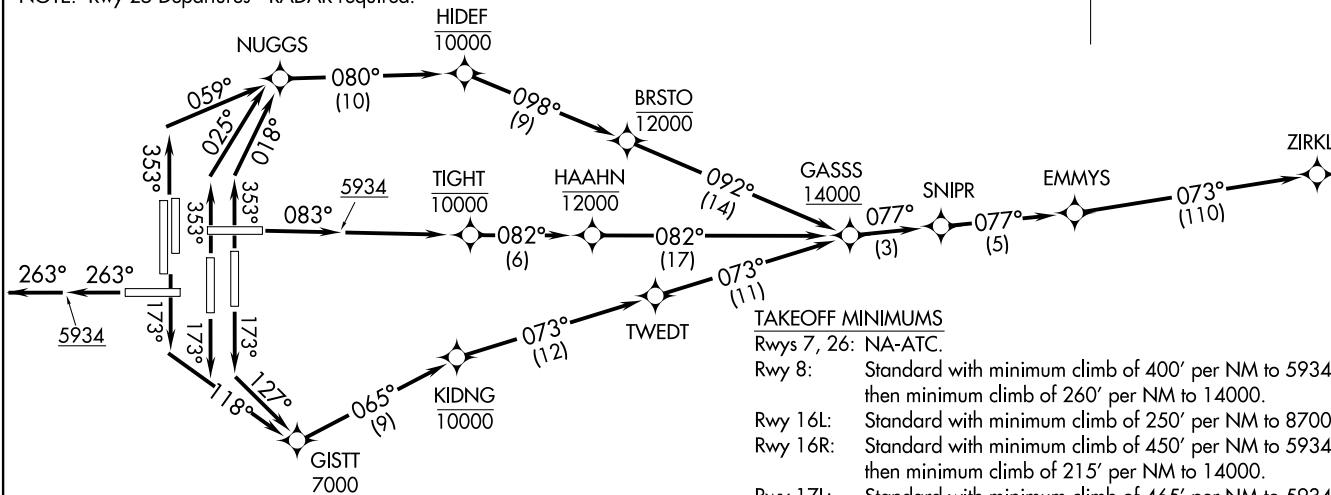
NOTE: RNAV 1.

NOTE: Turbojets only.

NOTE: Takeoff Rwy 16L/R, 17L/R, 34L/R, 35L/R - RADAR required for non-GPS equipped aircraft.

NOTE: Accelerate to 250K or greater upon reaching 10000. If slower speed is required to meet crossing restrictions advise CLNC DEL prior to taxi.

NOTE: Rwy 25 Departures - RADAR required.

**TOP ALTITUDE:
FL230**D-ATIS DEP
134.025
CLNC DEL
118.75
CPDLC
DENVER DEP CON
128.25 371.95



DEPARTURE ROUTE DESCRIPTION

TAKEOFF RUNWAY 8: Climb on heading 083° to 5934, then direct to cross TIGHT at or below 10000, then on track 082° to cross HAAHN at or below 12000, then on track 082° to cross GASSS at or above 14000, then on track 077° to SNIPR, then on track 077° to EMMYS, thence. . . .

TAKEOFF RUNWAYS 16L/R, 17R: Climb on heading 173° to intercept course 118° to cross GISTT at or above 7000, then on track 065° to cross KIDNG at or below 10000, then on track 073° to TWEDT, then on track 073° to cross GASSS at or above 14000, then on track 077° to SNIPR , then on track 077° to EMMYS, thence. . . .

TAKEOFF RUNWAY 17L: Climb on heading 173° to intercept course 127° to cross GISTT at or above 7000, then on track 065° to cross KIDNG at or below 10000, then on track 073° to TWEDT, then on track 073° to cross GASSS at or above 14000, then on track 077° to SNIPR, then on track 077° to EMMYS, thence. . . .

TAKEOFF RUNWAY 25: Climb on heading 263° to 5934, then continue climb on heading 263° or as assigned by ATC for RADAR vectors to EMMYS, thence. . . .

TAKEOFF RUNWAYS 34L/R: Climb on heading 353° to intercept course 059° to NUGGS then on track 080° to cross HIDEF at/below 10000, then on track 098° to cross BRSTO at/or below 12000, then on track 092° to cross GASSS at/above 14000, then on track 077° to SNIPR, then on track 077° to EMMYS, thence. . . .

TAKEOFF RUNWAY 35L: Climb on heading 353° to intercept course 025° to NUGGS, then on track 080° to cross HIDEF at or below 10000, then on track 098° to cross BRSTO at or below 12000, then on track 092° to cross GASSS at or above 14000, then on track 077° to SNIPR, then on track to 077° to EMMYS, thence. . . .

TAKEOFF RUNWAY 35R: Climb on heading 353° to intercept course 018° to NUGGS, then on track 080° to cross HIDEF at or below 10000, then on track 098° to cross BRSTO at or below 12000, then on track 092° to cross GASSS at or above 14000, then on track 077° to SNIPR, then on track to 077° to EMMYS, thence. . . .

. . . .on depicted route to ZIRKL. Maintain FL230 or filed lower altitude, expect higher filed altitude 10 minutes after departure.

SW-1, 22 FEB 2024 to 21 MAR 2024

SW-1, 22 FEB 2024 to 21 MAR 2024