

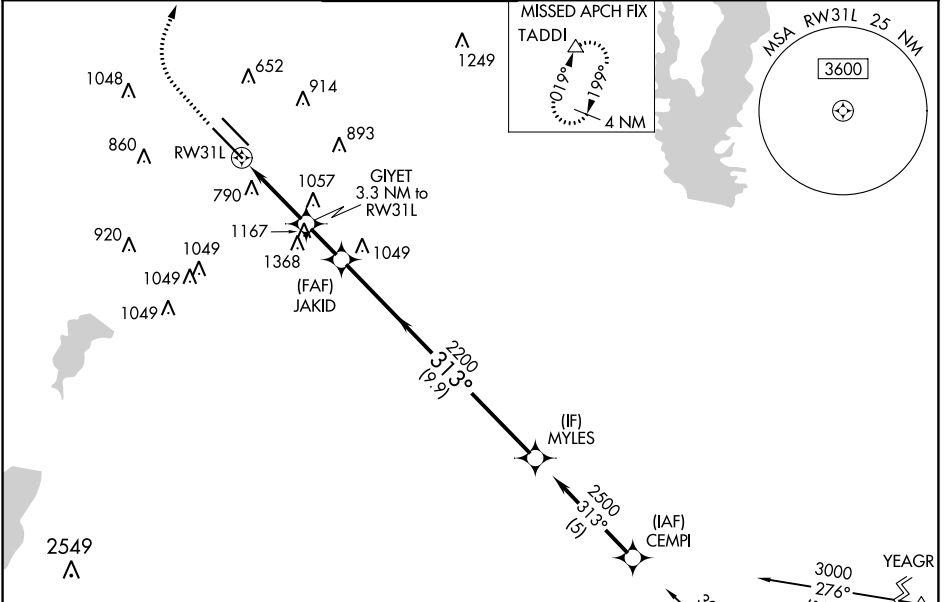
WAAS CH 72808 W31A	APP CRS 313°	Rwy Idg TDZE 477 Apt Elev 487
--	------------------------	---

RNAV (GPS) Y RWY 31L

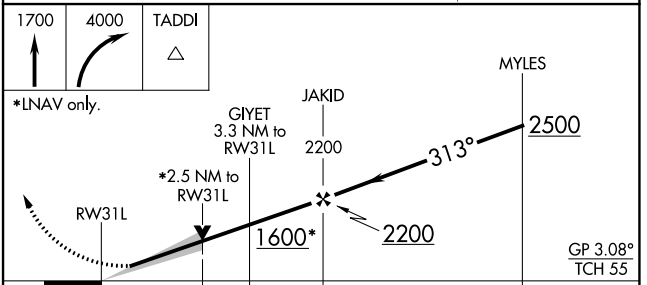
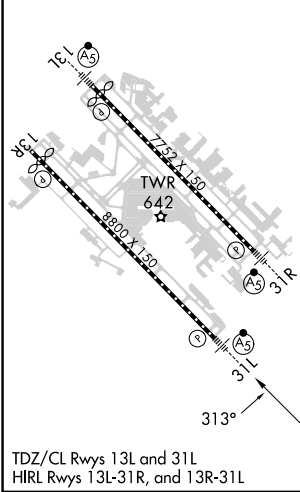
DALLAS LOVE FLD (DAL)

RNP APCH. Simultaneous approach authorized. Use of FD or AP providing RNAV track guidance required during simultaneous operations. LNAV procedure NA during simultaneous operations. For inop ALS, increase LPV all Cats visibility to RVR 4500.	MALSR 	MISSED APPROACH: Climb to 1700 then climbing right turn to 4000 direct TADDI and hold.
---	-----------	--

D-ATIS 120.15	REGIONAL APP CON NORTH 124.3 282.275 SOUTH 125.2 343.65	LOVE TOWER 123.7 239.3	GND CON 121.75 348.6	CLNC DEL 127.9	CPDLC
-------------------------	---	----------------------------------	--------------------------------	--------------------------	-------



ELEV 487	D	TDZE 477
----------	----------	----------



CATEGORY	A	B	C	D
LPV DA	770/22 293 (300-½)			
LNAV MDA	1360/40	883 (900-¾)	1360-2	883 (900-2)
C CIRCLING	1360-1¼	873 (900-1¼)	1360-2½ 873 (900-2½)	1520-3 1033 (1100-3)

SC-2, 22 FEB 2024 to 21 MAR 2024

SC-2, 22 FEB 2024 to 21 MAR 2024