

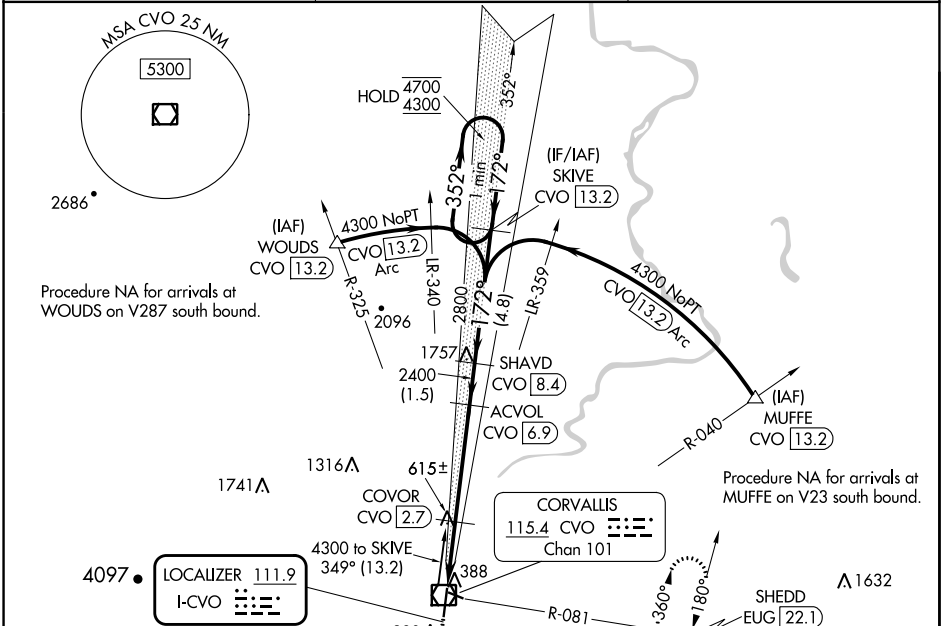
LOC I-CVO 111.9	APP CRS 172°	Rwy Idg 5900
		TDZE 248
		Apt Elev 250

ILS or LOC RWY 17

CORVALLIS MUNI (CVO)

DME required.	MALSR	MISSED APPROACH: Climb to 900 then climbing left turn to 3000 on heading 050° and on CVO VOR/DME R-081 to SHEDD INT/EUG 22.1 DME and hold, continue climb-in-hold to 3000.
<p>⚠ Circling Rwy 28 NA at night. For inop ALS, increase S-LOC 17 Cat C/D visibility to 1¼ SM. DME from CVO VOR/DME. DME use requires simultaneous reception of I-CVO and CVO DME.</p>		

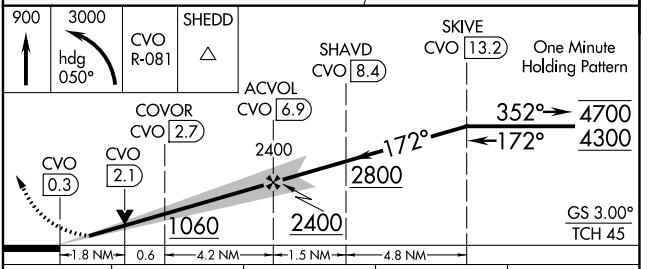
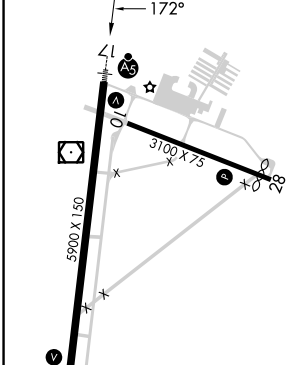
AWOS-3PT 135.775	CASCADE APP CON ★ 127.5 348.7	UNICOM 123.075 (CTAF) ①
----------------------------	---	-----------------------------------



NW-1, 22 FEB 2024 to 21 MAR 2024

NW-1, 22 FEB 2024 to 21 MAR 2024

ELEV 250	D TDZE 248
----------	------------



REIL Rwy 35 ①				
MIRL Rwy 10-28 and 17-35 ①				
FAF to MAP 6.6 NM				
	60	90	120	150
Knots	60	90	120	150
Min:Sec	6:36	4:24	3:18	2:38
	180	210	240	270
	60	90	120	150
	60	90	120	150