

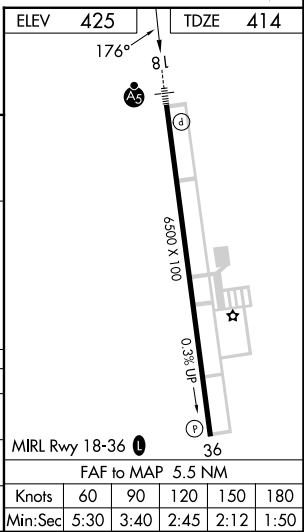
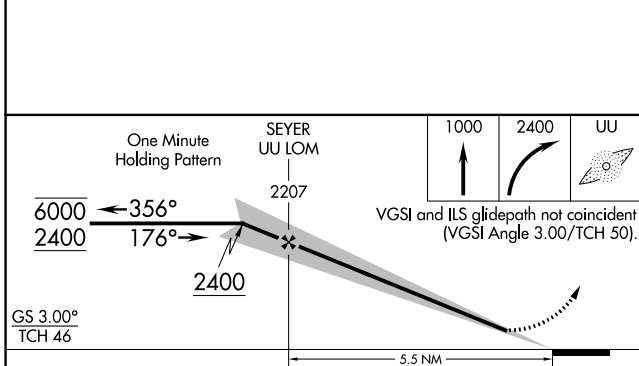
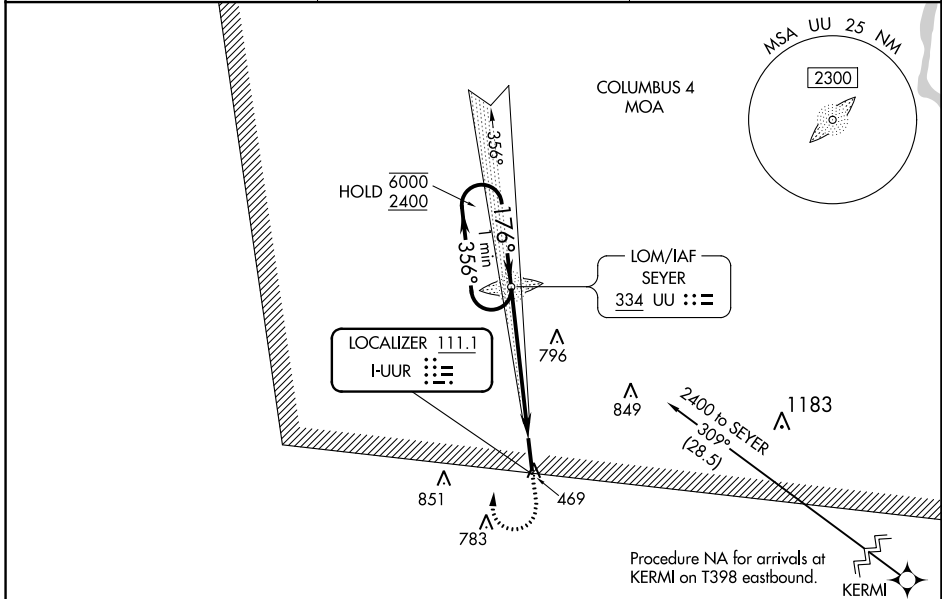
LOC I-UUR <b>111.1</b>	APP CRS <b>176°</b>	Rwy Idg TDZE Apt Elev	<b>6500</b> <b>414</b> <b>425</b>
---------------------------	------------------------	-----------------------------	---

# ILS or LOC RWY 18

ROSCOE TURNER (CRX)

ADF required. RNAV 1-GPS.		MALSR 	MISSED APPROACH: Climb to 1000 then climbing right turn to 2400 direct UU LOM and hold, continue climb-in-hold to 2400.
Autopilot coupled approach NA below 1040. For inop ALS, increase S-LOC 18 Cats C and D visibility to 1¼ SM.			

AWOS-3PT <b>118.675</b>	MEMPHIS CENTER <b>135.9 273.55</b>	UNICOM <b>122.8 (CTAF) 1</b>
----------------------------	---------------------------------------	---------------------------------



CATEGORY	A	B	C	D
S-ILS 18	614-½		200 (200-½)	
S-LOC 18	1020-½	606 (600-½)	1020-1¾	606 (600-1¾)
<b>C</b> CIRCLING	1020-1	595 (600-1)	1100-2 675 (700-2)	1160-2¼ 735 (800-2¼)

SC-4, 22 FEB 2024 to 21 MAR 2024

SC-4, 22 FEB 2024 to 21 MAR 2024