

APP CRS	Rwy Idg	4600
065°	TDZE	331
	Apt Elev	331

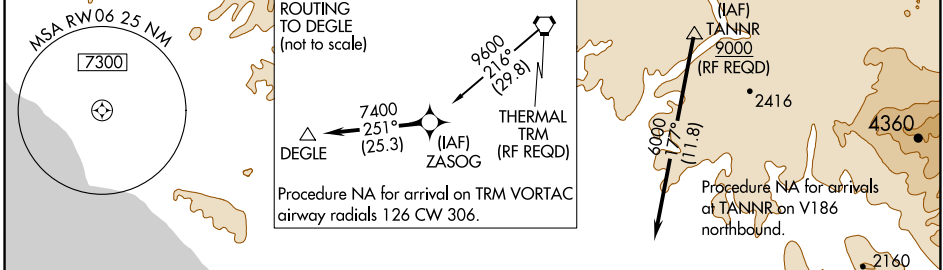
RNAV (RNP) Z RWY 6

MC CLELLAN-PALOMAR (CRQ)

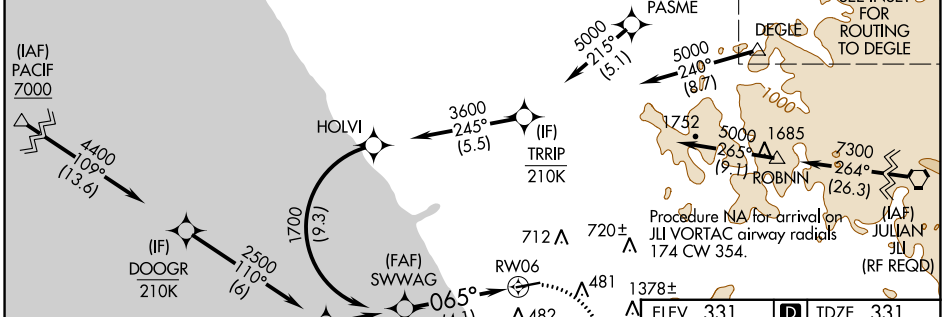
▼ For uncompensated Baro-VNAV systems, procedure NA below 4°C (40°F) or above 54°C (130°F). GPS required.

MISSED APPROACH: Climbing right turn to 3000 direct TIZIE and hold, continue climb-in-hold to 3000.

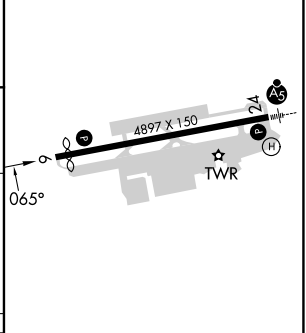
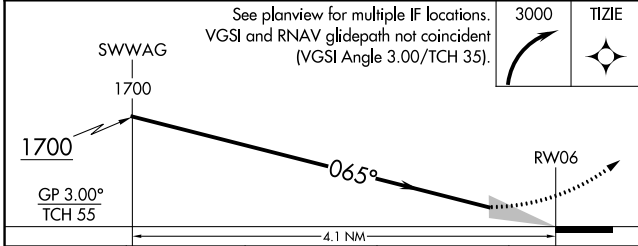
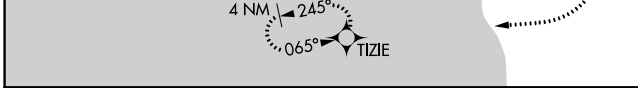
ATIS 120.15	SOCAL APP CON 127.3 323.0	PALOMAR TOWER ★ 118.6 (CTAF) 0 276.4	GND CON 121.8	CLNC DEL 134.85
-----------------------	-------------------------------------	--	-------------------------	---------------------------



Procedure NA for arrivals at PACIF on V25-27 northwest bound and V208-458 westbound.



ELEV 331	TDZE 331
----------	----------



CATEGORY	A	B	C	D
RNP 0.30 DA		810-15%	479 (500-1%)	

AUTHORIZATION REQUIRED

REIL Rwy 24 0
HIRL Rwy 6-24 0

SW-3, 22 FEB 2024 to 21 MAR 2024

SW-3, 22 FEB 2024 to 21 MAR 2024