

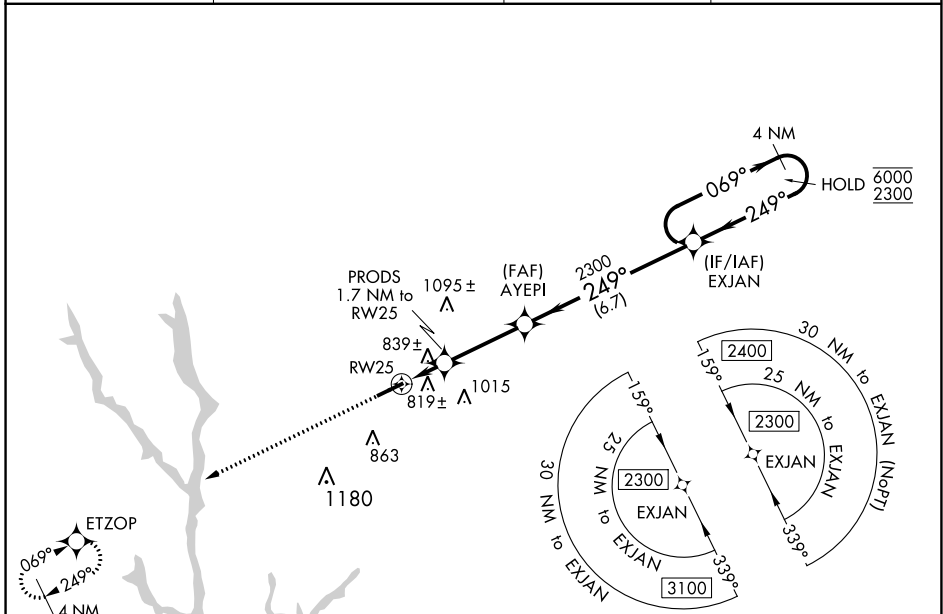
WAAS CH 70616 W25A	APP CRS 249°	Rwy Idg TDZE Apt Elev	5500 689 689
--	------------------------	-----------------------------	---

RNAV (GPS) RWY 25

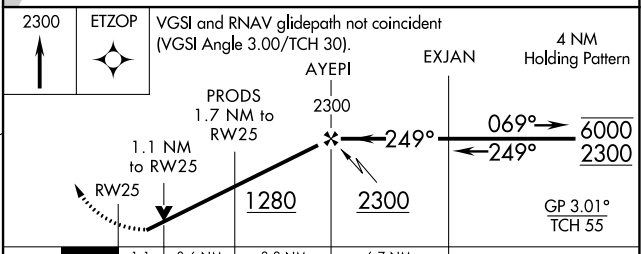
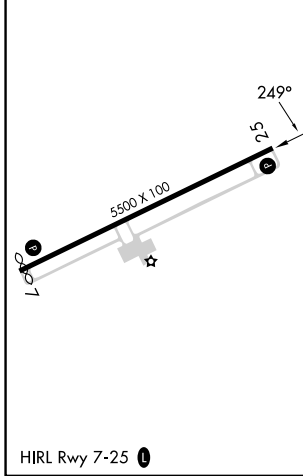
GREENE COUNTY RGNL (CPP)

RNP APCH - GPS.		MISSED APPROACH: Climb to 2300 direct ETZOP and hold.
<p>▼ Rwy 25 helicopter visibility reduction below 3/4 SM NA.</p> <p>▲ For uncompensated Baro-VNAV systems, LNAV/VNAV NA below -16°C or above 54°C.</p>		

AWOS-3 124.525	ATLANTA APP CON * 132.475 291.1	GCO 121.725	UNICOM 122.8(CTAF)
--------------------------	---	-----------------------	------------------------------



ELEV 689	D	TDZE 689
----------	----------	----------



CATEGORY	A	B	C	D
LPV DA		981-7/8	292 (300-7/8)	
LNAV/VNAV DA		1065-1	376 (400-1)	
LNAV MDA	1080-1	391 (400-1)	1080-1 1/8	391 (400-1 1/8)
C CIRCLING	1140-1 451 (500-1)	1180-1 491 (500-1)	1320-1 3/4 631 (700-1 3/4)	1480-2 1/2 791 (800-2 1/2)

SE-4, 22 FEB 2024 to 21 MAR 2024

SE-4, 22 FEB 2024 to 21 MAR 2024