


LOC/DME I-RRU <b>111.3</b> Chan 50	APP CRS <b>269°</b>	Rwy Idg TDZE <b>8175</b> <b>862</b> Apt Elev <b>869</b>
--	------------------------	--

# ILS or LOC RWY 27

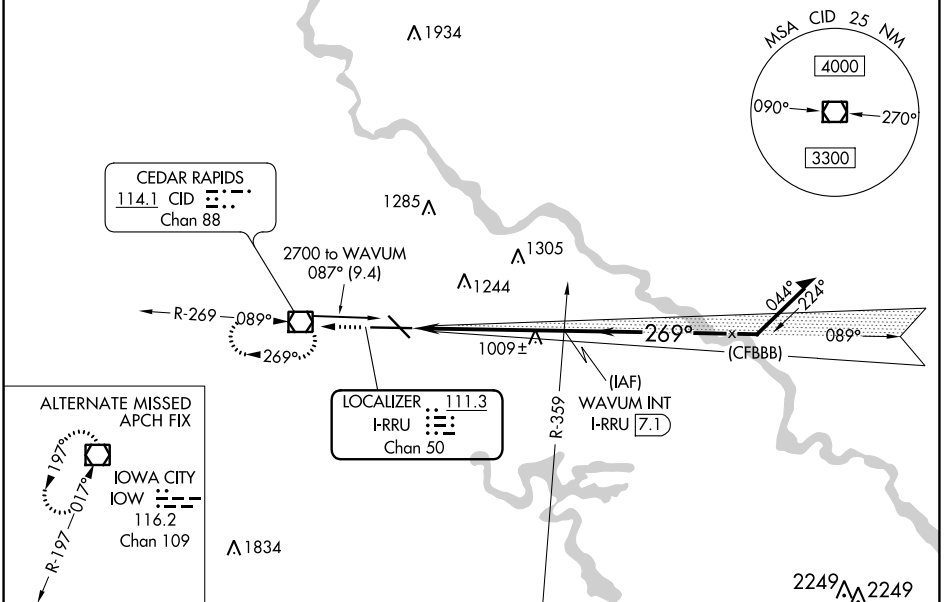
THE EASTERN IOWA (CID)

**⚠** VDP NA with Iowa City altimeter setting. Autopilot coupled approach NA below 1910.  
**⚠** When local altimeter setting not received, use Iowa City altimeter setting: increase DA to 1126 feet; increase all MDA 80 feet, increase S-LOC Cat C and D visibility to RVR 5000, and Circling Cat C and D visibility ¼ SM.  
 #RVR 1800 authorized with use of FD or HUD to DA (NA when using Iowa City altimeter setting).

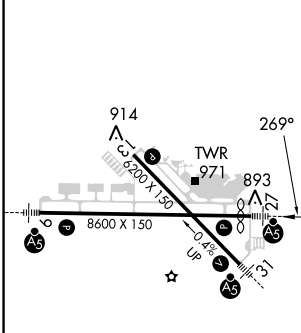
**MALSR** 

**MISSED APPROACH:** Climb to 2900 direct CID VOR/DME and hold, continue climb-in-hold to 2900.

ATIS <b>124.15</b>	CEDAR RAPIDS APP CON* <b>119.7 266.8</b>	CEDAR RAPIDS TOWER* <b>118.7 (CTAF) 266.8</b>	GND CON <b>121.6</b>	CLNC DEL <b>125.45</b>	UNICOM <b>122.95</b>
-----------------------	---	--	-------------------------	---------------------------	-------------------------



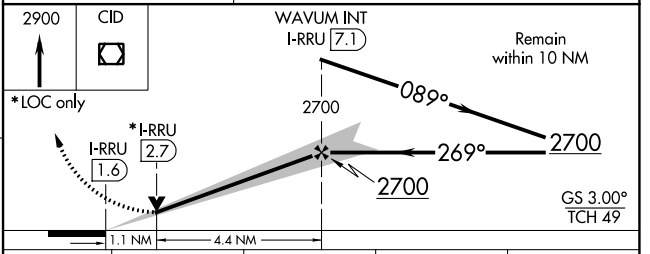
ELEV <b>869</b>	<b>D</b>	TDZE <b>862</b>
-----------------	----------	-----------------



MIRL Rwy 13-31 **1**  
 HIRL Rwy 9-27 **1**  
 REIL Rwy 13

FAF to MAP 5.5 NM

Knots	60	90	120	150	180
Min:Sec	5:30	3:40	2:45	2:12	1:50



CATEGORY	A	B	C	D
S-ILS 27 #	1062/24 200 (200-½)			
S-LOC 27	1260/24	398 (400-½)	1260/35	398 (400-¾)
CIRCLING	1280-1 411 (500-1)	1320-1 451 (500-1)	1560-2 691 (700-2)	1560-2¼ 691 (700-2¼)

NC-3, 22 FEB 2024 to 21 MAR 2024

NC-3, 22 FEB 2024 to 21 MAR 2024