

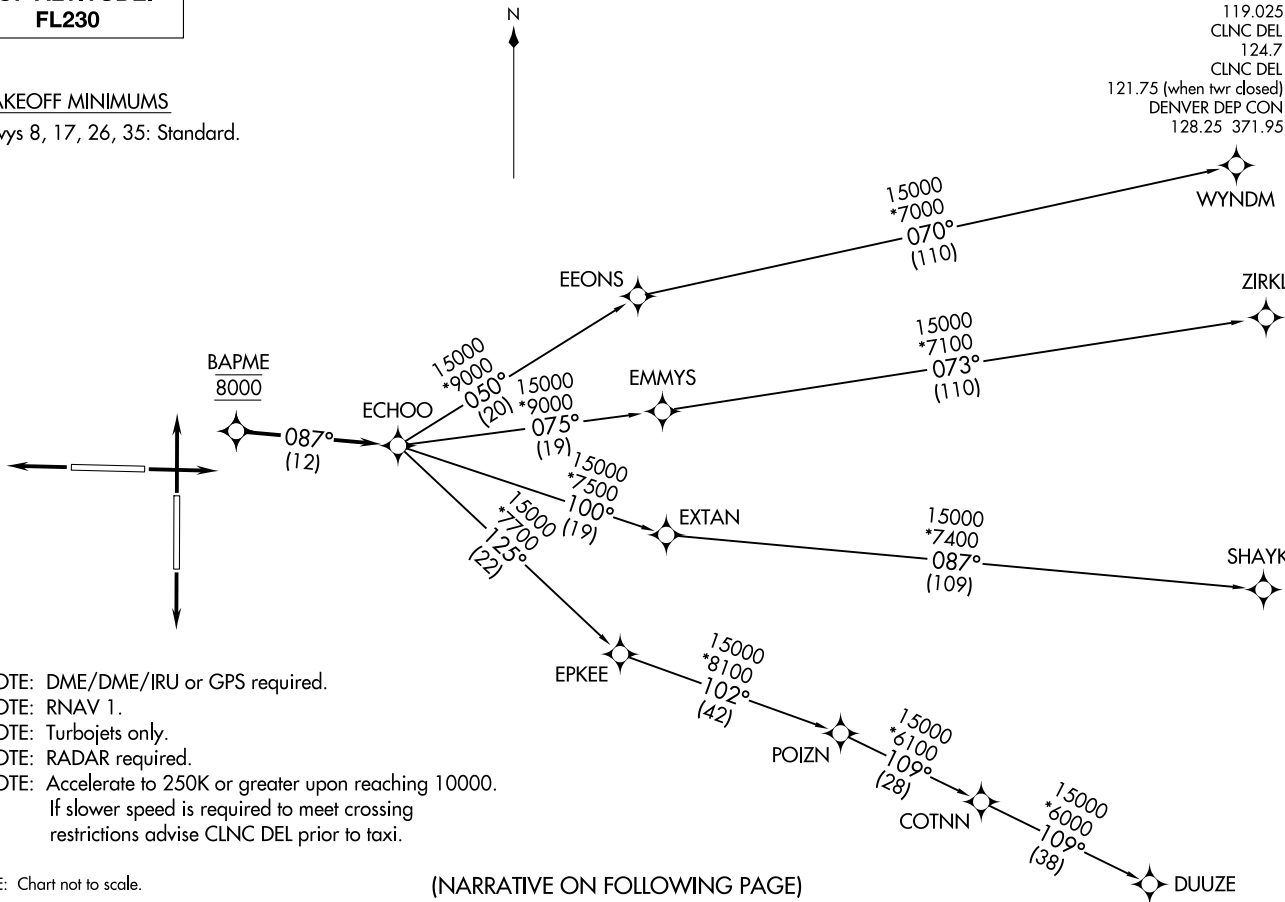
ATIS 119.025  
CLNC DEL 124.7  
CLNC DEL 128.25  
DENVER DEP CON 128.25 371.95  
121.75 (when twr closed)

TOP ALTITUDE:

FL230

TAKEOFF MINIMUMS

Rwys 8, 17, 26, 35: Standard.



NOTE: DME/DME/IRU or GPS required.  
NOTE: RNAV 1.  
NOTE: Turbojets only.  
NOTE: RADAR required.  
NOTE: Accelerate to 250K or greater upon reaching 10000.  
If slower speed is required to meet crossing  
restrictions advise CLNC DEL prior to taxi.

NOTE: Chart not to scale.

(NARRATIVE ON FOLLOWING PAGE)



DEPARTURE ROUTE DESCRIPTION

TAKEOFF RUNWAY 8: Climb on a heading between 312° CW 228° as assigned by ATC. Thence. . . .

TAKEOFF RUNWAY 17: Climb on a heading between 352° CW 229° as assigned by ATC. Thence. . . .

TAKEOFF RUNWAY 26: Climb on a heading between 315° CW 083° as assigned by ATC. Thence. . . .

TAKEOFF RUNWAY 35: Climb on a heading between 313° CW 172° as assigned by ATC. Thence. . . .

. . . .expect RADAR vectors to cross BAPME at 8000 then on track 087° to ECHOO, then on (transition) maintain FL230 or filed lower altitude. Expect higher filed altitude ten minutes after departure.

- DUUZE TRANSITION (ECHOO1.DUUZE)
- SHAYK TRANSITION (ECHOO1.SHAYK)
- WYNDM TRANSITION (ECHOO1.WYNDM)
- ZIRKL TRANSITION (ECHOO1.ZIRKL)

SW-1, 22 FEB 2024 to 21 MAR 2024

SW-1, 22 FEB 2024 to 21 MAR 2024