

WAAS CH 42911 W06A	APP CRS 060°	Rwy Idg TDZE Apt Elev	6406 616 616
--	------------------------	-----------------------------	---

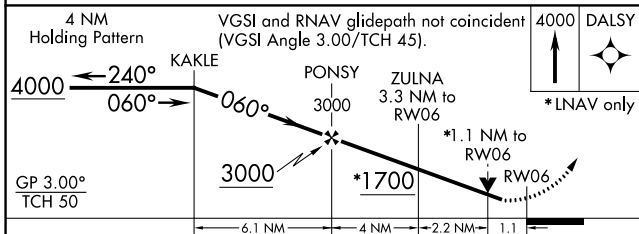
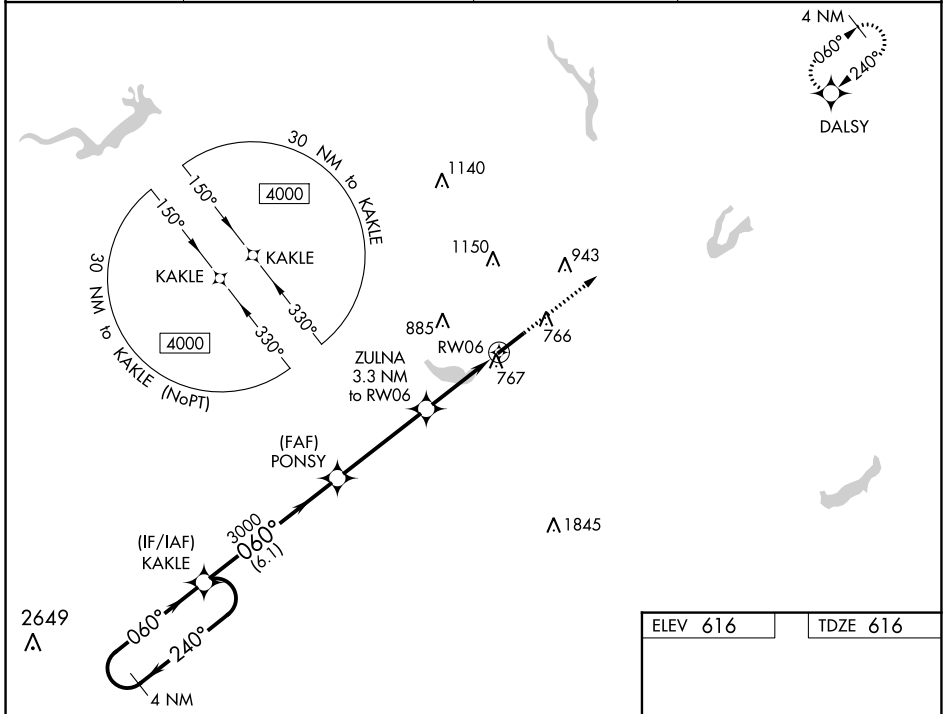
RNAV (GPS) RWY 6

BURLINGTON/ALAMANCE RGNL (BUY)

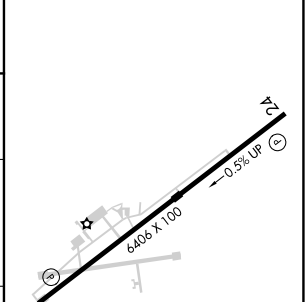
▼ For uncompensated Baro-VNAV systems, LNAV/VNAV NA below -12°C (11°F) or above 54°C (130°F). DME/DME RNP-0.3 NA. When local altimeter setting not received, use Greensboro altimeter setting and increase all DA 97 feet and all MDA 100 feet, increase LPV and LNAV/VNAV visibility 3/8 mile, LNAV Cats C/D and Circling Cat C 1/4 mile. VDP and Baro-VNAV NA when using Greensboro altimeter setting. Helicopter visibility reduction below 3/4 SM NA.

MISSED APPROACH:
Climb to 4000 direct DALSY and hold.

ASOS 135.325	GREENSBORO APP CON 126.6 327.075	CLNC DEL 120.25	UNICOM 122.975 (CTAF) 0
------------------------	--	---------------------------	--



ELEV 616	TDZE 616
----------	----------



CATEGORY	A	B	C	D
LPV DA		866-3/4	250 (300-3/4)	
LNAV/VNAV DA		928-1	312 (400-1)	
LNAV MDA	1020-1	404 (500-1)	1020-1 1/8	404 (500-1 1/8)
C CIRCLING	1100-1	484 (500-1)	1520-2 3/4 904 (1000-2 3/4)	1520-3 904 (1000-3)

HIRL Rwy 6-24 **0**
REIL Rwy 6 and 24 **0**

SE-2, 22 FEB 2024 to 21 MAR 2024

SE-2, 22 FEB 2024 to 21 MAR 2024