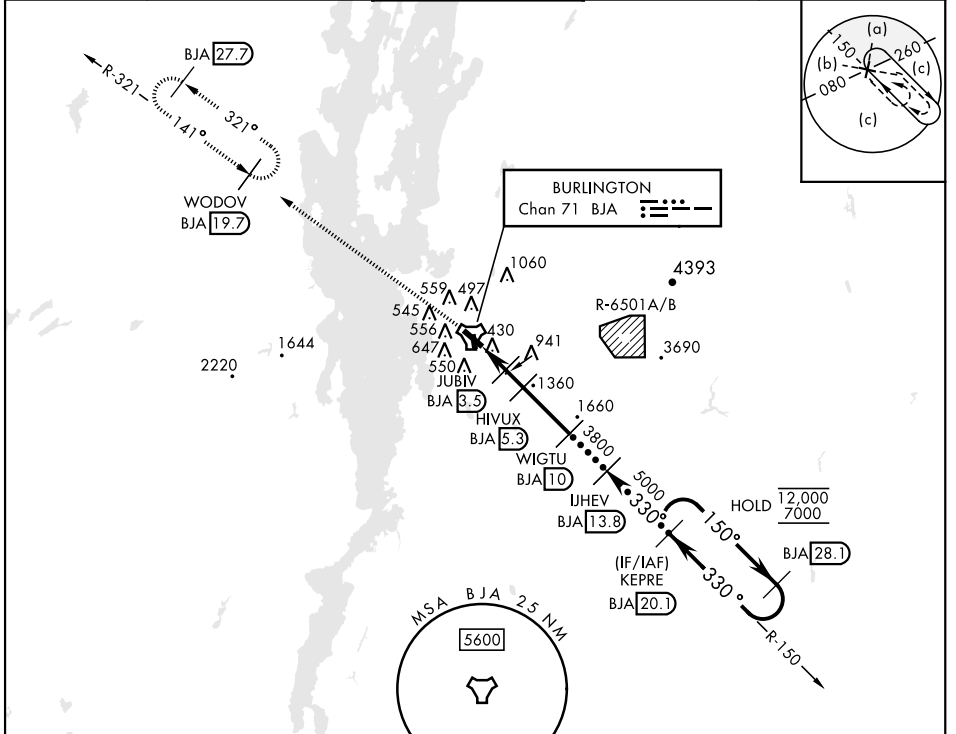


HI-TACAN RWY 33

TACAN BJA Chan 71	APCH CRS 330°	Rwy ldg 7819 TDZE 334 Arprt Elev 335	AL-70 [USAF]	PATRICK LEAHY BURLINGTON INTL (KBTV)
----------------------	------------------	---	--------------	--------------------------------------

		MISSED APPROACH: Climb to 8000 on BJA TACAN R-321 to WODOV/BJA 19.7 DME and hold, continue climb-in-hold to 8000.		
--	--	---	--	--

ATIS 123.8 269.9	APP CON 121.1 278.8	TOWER ★ 118.3 (CTAF) 0257.8	GND CON 126.3 348.6	CLNC DEL 119.15
---------------------	------------------------	--------------------------------	------------------------	--------------------



NE-1, 22 FEB 2024 to 21 MAR 2024

NE-1, 22 FEB 2024 to 21 MAR 2024

NOT FOR CIVIL USE

EMERG SAFE ALT 100 NM 8500

8000 BJA R-321

WODOV BJA 19.7

VGSI and descent angles not coincident (VGSI Angle 3.20/TCH 53).

KEPRE 20.1

28.1

TACAN

ZOKOD 0.9

JUBIV 3.5

HIVUX 5.3

WIGTU 10

IUHEV 13.8

330°

5000

3800

2040

1360

3.50° TCH 53

CATEGORY	C	D	E
S-33	1200-2½	866 (900-2½)	
CIRCLING	1220-2¾ 885 (900-2¾)	1380-3 1045 (1100-3)	1500-3 1165 (1200-3)

ELEV 335

TDZE 334

349±

380±

330°

330°

343±

Rwy 1 ldg 3386'

Rwy 19 ldg 3386'

Rwy 15 ldg 7820'

Rwy 33 ldg 7819'

MRL Rwy 1-19

HIRL Rwy 15-33

HI-TACAN RWY 33