

WAAS CH 49141 W13A	APP CRS 128°	Rwy Idg TDZE Apt Elev	3668 31 32
--	------------------------	-----------------------------	---------------------------------------

RNAV (GPS) RWY 13

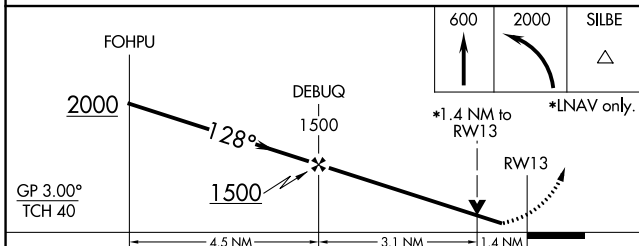
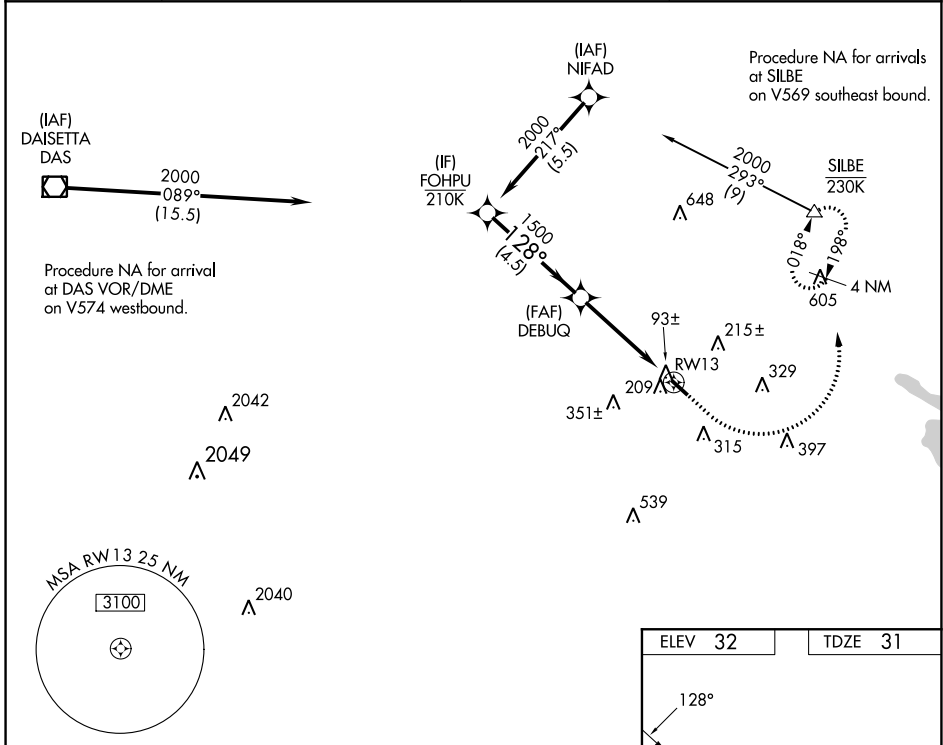
BEAUMONT MUNI (BMT)

RNP APCH GPS.

▼ For uncompensated Baro-VNAV systems, LNAV/VNAV NA below -15°C or above 54°C. Circling Rwy 31 NA at night. Rwy 13 helicopter visibility reduction below ¾ SM NA.

MISSED APPROACH: (Do not exceed 230K until SILBE) Climb to 600 then climbing left turn to 2000 direct SILBE and hold.

AWOS-3PT 118.425	HOUSTON APP CON 121.3 377.1	CLNC DEL 121.75	UNICOM 123.0 (CTAF) 1
----------------------------	---------------------------------------	---------------------------	--



ELEV 32	TDZE 31
---------	---------

REIL Rwy 13

MIRL Rwy 13-31 **1**

CATEGORY	A	B	C	D
LPV DA		295-7/8	264 (300-7/8)	
LNAV/VNAV DA		433-1 1/8	402 (500-1 1/8)	
LNAV MDA	520-1	489 (500-1)	520-1 3/8	489 (500-1 3/8)
CIRCLING	580-1	620-1	720-2	720-2 1/4
	548 (600-1)	588 (600-1)	688 (700-2)	688 (700-2 1/4)

SC-5, 22 FEB 2024 to 21 MAR 2024

SC-5, 22 FEB 2024 to 21 MAR 2024