
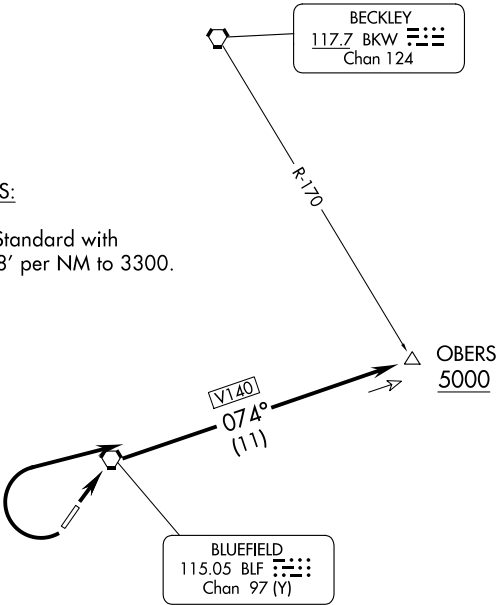


INDANAPOLIS CENTER
126.575 257.85
CTAF 122.9 
ASOS 132.725

TOP ALTITUDE:
ASSIGNED BY ATC

TAKE-OFF MINIMUMS:

Rwy 5: Standard.
Rwy 23: 400-2¼ or Standard with
minimum climb of 238' per NM to 3300.



NOTE: Chart not to scale.



DEPARTURE ROUTE DESCRIPTION

TAKE-OFF RUNWAY 5: Climb via BLF R-074 to cross OBERS INT at or above 5000' or altitude assigned by ATC. Thence

TAKE-OFF RUNWAY 23: Climbing right turn via BLF R-074 to cross OBERS INT at or above 5000' or altitude assigned by ATC. Thence

. . . . via ATC assigned route.

NE-4, 22 FEB 2024 to 21 MAR 2024

NE-4, 22 FEB 2024 to 21 MAR 2024