

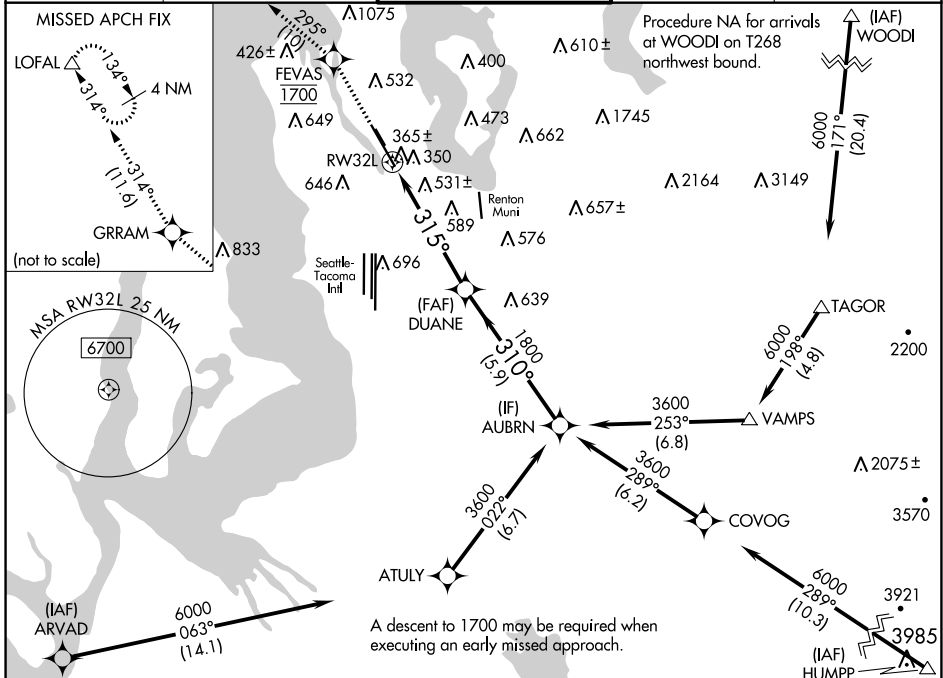
WAAS CH <b>89057</b> <b>W32A</b>	APP CRS <b>315°</b>	Rwy Idg TDZE <b>22</b> Apt Elev <b>22</b>
--	------------------------	---

# RNAV (GPS) Y RWY 32L

BOEING FLD/KING COUNTY INTL (BFI)

RNP APCH - GPS.		MISSED APPROACH: Climb direct FEVAS, cross FEVAS at 1700, then climb to 3000 on the RNAV missed approach route to LOFAL and hold.
RADAR required for missed approach.		
<p>▼ For uncompensated Baro-VNAV systems, LNAV/VNAV NA below -6°C or above 54°C. Circling NA for Cats C and D northeast of Rwy 14L-32R. Circling Rwy 32R NA at night. Rwy 32L helicopter visibility reduction below ¾ SM NA.</p>		

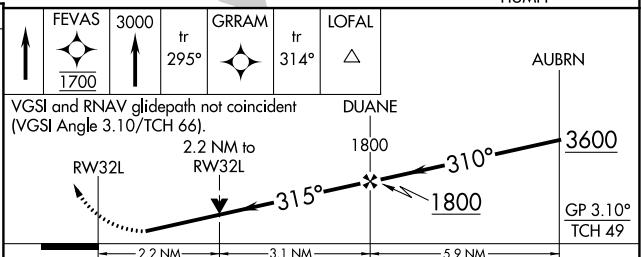
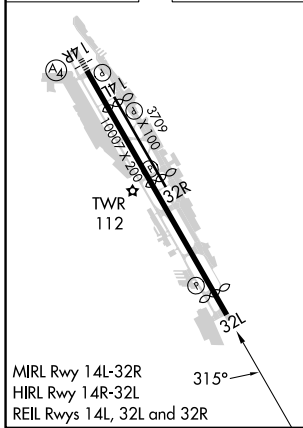
ATIS <b>127.75</b>	SEATTLE APP CON <b>125.9 306.9</b>	BOEING TOWER <b>120.6 257.8</b>	GND CON <b>121.9</b>	CLNC DEL <b>132.4</b>
-----------------------	---------------------------------------	------------------------------------	-------------------------	--------------------------



NW-1, 22 FEB 2024 to 21 MAR 2024

NW-1, 22 FEB 2024 to 21 MAR 2024

ELEV 22	<b>D</b> TDZE 22
---------	------------------



CATEGORY	A	B	C	D
LPV DA		478-1 3/8	456 (500-1 1/2)	
LNAV/VNAV DA		884-2 1/2	862 (900-2 1/2)	
LNAV MDA	800-1 778 (800-1)	800-1 1/4 778 (800-1 1/4)	800-2 1/2 778 (800-2 1/2)	778 (800-2 1/2)
CIRCLING	800-1 778 (800-1)	900-1 1/4 878 (900-1 1/4)	960-2 3/4 938 (1000-2 3/4)	960-3 938 (1000-3)