

ATLANTA, GEORGIA

AL-26 (FAA)

23334

ILS PRM RWY 28 (CAT II) (CLOSE PARALLEL)

HARTSFIELD-JACKSON ATLANTA INTL (ATL)

LOC/DME I-PKU 111.75 Chan 54(Y)	APP CRS 275°	Rwy ldg TDZE 998 Apt Elev 1026	9000
---	------------------------	--	-------------

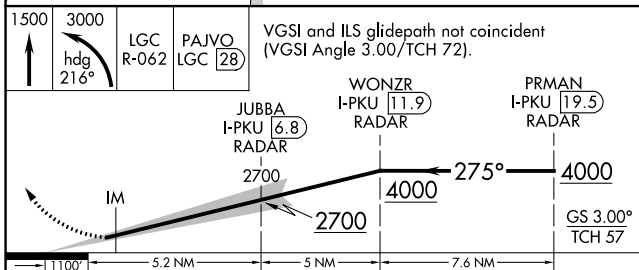
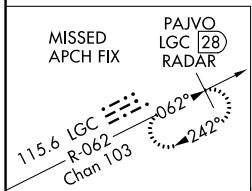
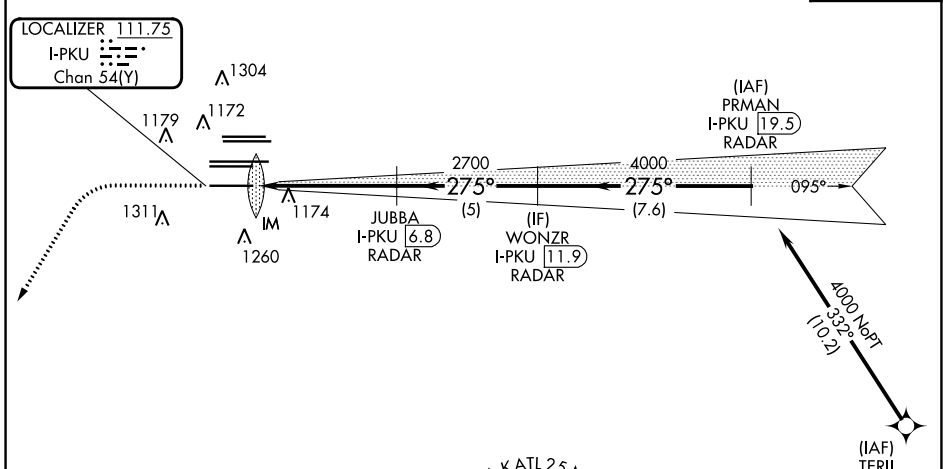
RNAV 1-GPS or RADAR required for procedure entry.
From TERII: RNAV 1-GPS required. DME or RADAR required.

ALSF-2 	MISSED APPROACH: Climb to 1500 then climbing left turn to 3000 on heading 216° and LGC VORTAC R-062 to PAJVO/LGC 28 DME/RADAR and hold.
------------	---

Simultaneous approach authorized. Use of FD or AP required during simultaneous operations. Dual VHF comm required. See additional requirements on AAUP.

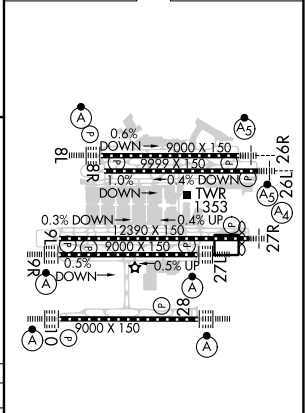
D-ATIS ARR 119.65 DEP 125.55	ATLANTA APP CON 127.9 379.9	ATLANTA TOWER 8L-26R 8R-26L 9L-27R 9R-27L 10-28 RWYS 119.1 125.325 123.85 119.3 119.5 254.4 PRM 133.425	ALL RWYS (8L-26R,8R-26L) (9L-27R,9R-27L) 10-28 121.9 121.75 121.65 254.4	GND CON 121.9 121.75 121.65 254.4
--	---------------------------------------	--	---	---

CLNC DEL 118.1	CPDLC
--------------------------	-------



1500	3000	LGC R-062	PAJVO LGC 28	VGSI and ILS glidepath not coincident (VGSI Angle 3.00/TCH 72).
hdg 216°				
IM	JUBBA I-PKU 6.8	WONZR I-PKU 11.9	PRM I-PKU 19.5	
1100	5.2 NM	5 NM	7.6 NM	GS 3.00% TCH 57
CATEGORY	A	B	C	D
S-ILS 28	RA 188/12		100 DA 1098	

ELEV 1026	TDZE 998
-----------	----------



HIRL all Rwys
TDZ/CL Rwys 8L, 9R, 10, 26R, 27L and 28

SE-4, 22 FEB 2024 to 21 MAR 2024

SE-4, 22 FEB 2024 to 21 MAR 2024

ATLANTA, GEORGIA
Amdt 5 07OCT21

33°38'N-84°26'W

HARTSFIELD-JACKSON ATLANTA INTL (ATL)

ILS PRM RWY 28 (CAT II) (CLOSE PARALLEL)