

ATLANTA, GEORGIA

AL-26 (FAA)

23334

LOC/DME I-FUN <b>108.9</b> Chan <b>26</b>	APP CRS <b>095°</b>	Rwy Idg 9R <b>9000 11730</b> 9L <b>1026 1019</b> TDZE Apt Elev <b>1026 1026</b>
---	------------------------	---

# ILS or LOC RWY 9R

HARTSFIELD-JACKSON ATLANTA INTL (ATL)

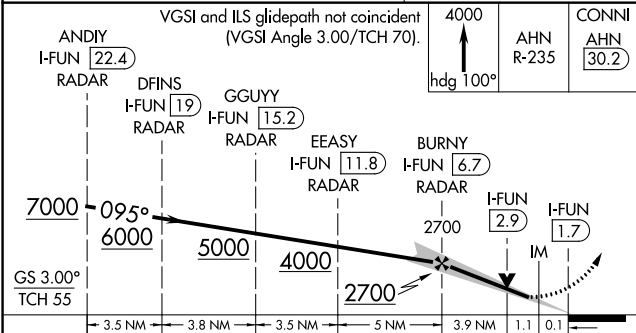
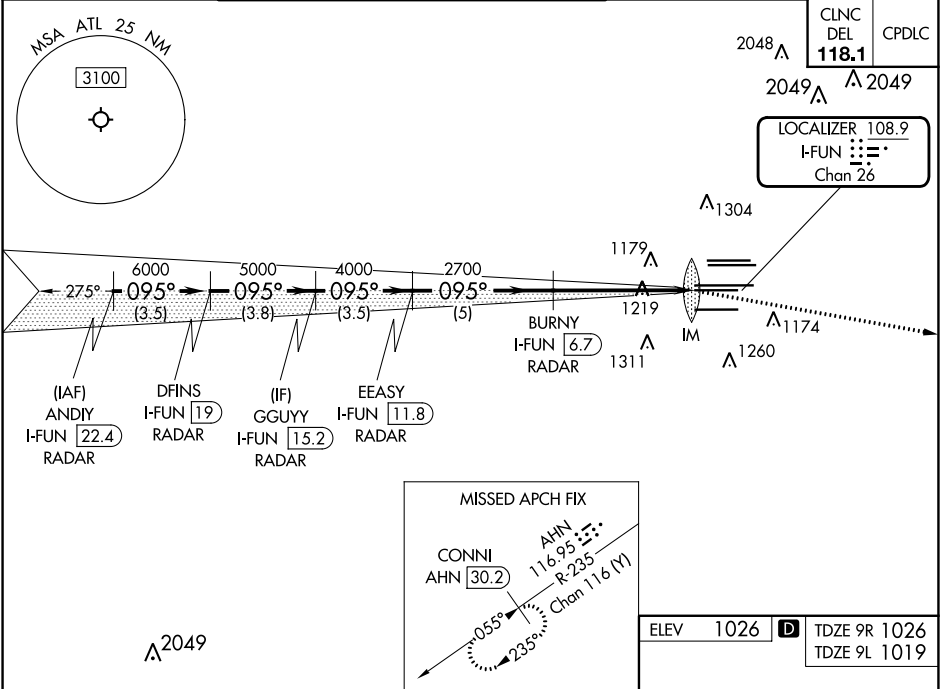
RADAR required for procedure entry, DME.

Simultaneous approach authorized.  
Inop table does not apply to sidestep Rwy 9L.

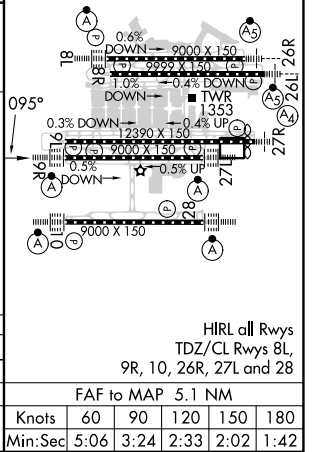
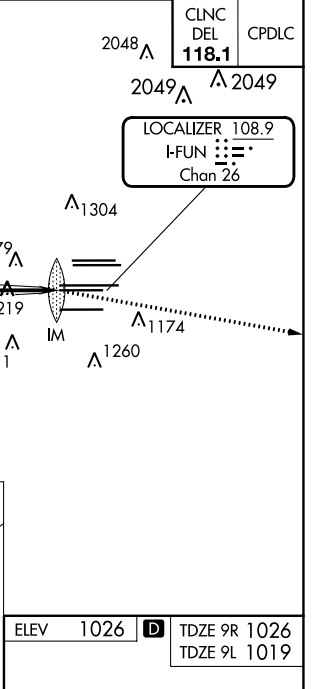
Rwy 9R  
ALSF-2

MISSED APPROACH: Climb to 4000 on heading 100° and AHN VOR/DME R-235 to CONNI/AHN 30.2 DME and hold.

D-ATIS ARR <b>119.65</b>	ATLANTA APP CON <b>127.9 379.9</b>	ATLANTA TOWER				ALL RWYS	GND CON	ALL RWYS
DEP <b>125.55</b>		8L-26R	8R-26L	9L-27R	9R-27L	10-28	(8L-26R,8R-26L) (9L-27R,9R-27L)	10-28
		<b>119.1</b>	<b>125.325</b>	<b>123.85</b>	<b>119.3</b>	<b>119.5</b>	<b>254.4</b>	<b>121.9</b>
								<b>121.75</b>
								<b>121.65</b>
								<b>254.4</b>



CATEGORY	A	B	C	D
S-ILS 9R	1226/18		200 (200-1/2)	
S-LOC 9R	1480/24	454 (500-1/2)	1480/45	454 (500-7/8)
SIDESTEP 9L	1480/55	461 (500-1)	1480-1 1/2 461 (500-1 1/2)	1480-2 461 (500-2)



ATLANTA, GEORGIA  
Amdt 20 22APR21

33°38'N-84°26'W

# ILS or LOC RWY 9R

HARTSFIELD-JACKSON ATLANTA INTL (ATL)

SE-4, 22 FEB 2024 to 21 MAR 2024