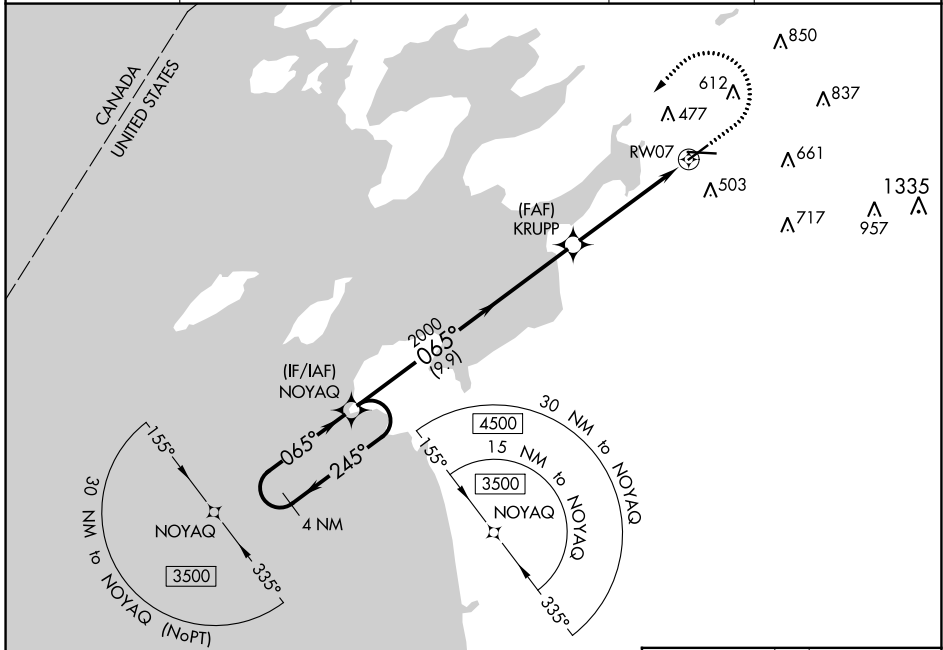


WAAS CH 82510 W07A	APP CRS 065°	Rwy Idg TDZE Apt Elev	4784 319 331
----------------------------------------	------------------------	-----------------------------	-----------------------------------------

RNAV (GPS) RWY 7

WATERTOWN INTL (ART)

RNP APCH.		MALSR		MISSED APPROACH: Climb to 900 then climbing left turn to 3500 direct NOYAQ and hold.	
For inop ALS, increase LPV, LNAV/VNAV visibilities to 3/4 SM and LNAV Cat C/D visibilities to 1 3/8 SM. For uncompensated Baro-VNAV systems, LNAV/VNAV NA below -18°C or above 54°C.					
ASOS 132.325	KGTB ATIS 119.525	WHEELER-SACK APP CON 124.875 257.6 307.125		CLNC DEL 120.8	UNICOM 123.0 (CTAF)



NE-2, 22 FEB 2024 to 21 MAR 2024

NE-2, 22 FEB 2024 to 21 MAR 2024

4 NM Holding Pattern		ELEV 331		TDZE 319	
NOYAQ		KRUPP		RW07	
3500 ← 245°		2000		* 1.3 NM to RW07	
→ 065°		→ 065°		* LNAV only	
GP 3.00°		2000			
TCH 51		9.9 NM		3.9 NM	
				1.3 NM	
CATEGORY	A	B	C	D	
LPV DA		519-1/2	200 (200-1/2)		
LNAV/VNAV DA		578-1/2	259 (300-1/2)		
LNAV MDA	780-1/2	461 (500-1/2)	780-1	461 (500-1)	
CIRCLING	960-1	629 (700-1)	980-1 3/4 649 (700-1 3/4)	1080-2 1/2 749 (800-2 1/2)	HIRL Rwy 7-25 MIRL Rwy 10-28