

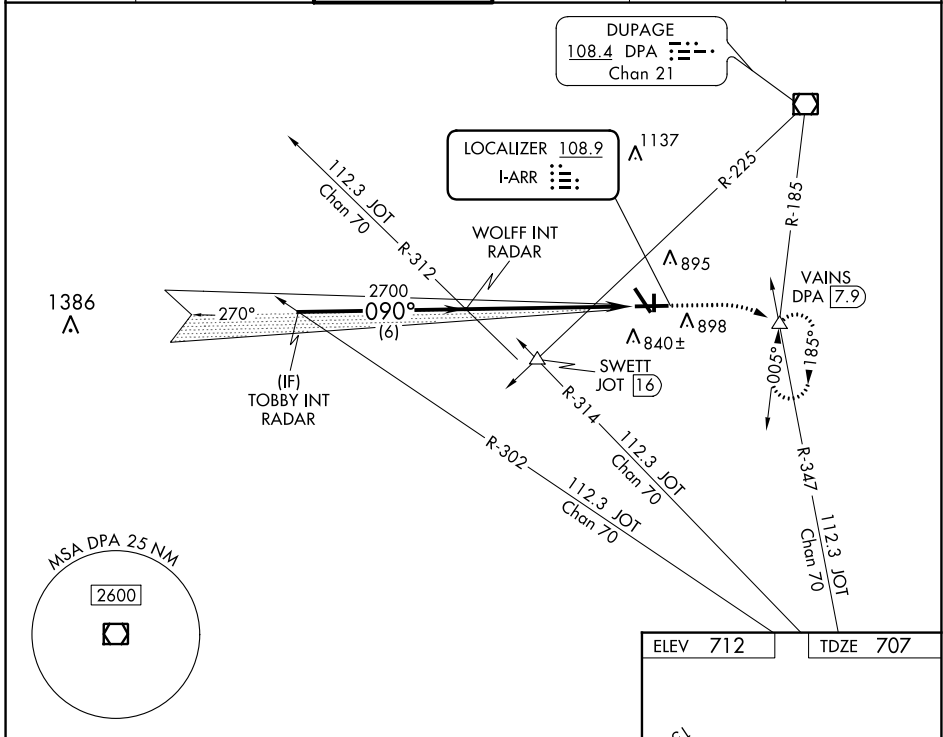
LOC I-ARR 108.9	APP CRS 090°	Rwy Idg TDZE Apt Elev	6501 707 712
---------------------------	------------------------	-----------------------------	---

ILS or LOC RWY 9

AURORA MUNI (A.R.R.)

RADAR required for procedure entry.		MALS R	MISSED APPROACH: Climb to 1200 then climbing right turn to 3000 on heading 090° and on DPA VOR/DME R-185 to VAINS INT/DPA 7.9 DME and hold, continue climb-in-hold to 3000.	
▼ For inop ALS, increase S-LOC 9 Cat C/D visibilities to 1½ SM.				

ATIS 125.85	CHICAGO APP CON 133.5 349.0	AURORA TOWER ★ 120.6 (CTAF)	GND CON 121.7	CLNC DEL 121.7 (When tower closed)	UNICOM 122.95 123.5
-----------------------	---------------------------------------	---------------------------------------	-------------------------	---	-------------------------------



EC-3, 22 FEB 2024 to 21 MAR 2024

EC-3, 22 FEB 2024 to 21 MAR 2024

TOBBY INT RADAR	WOLFF INT RADAR	1200	3000	VAINS
		↑	hdg 090°	DPA R-185
CATEGORY	A	B	C	D
S-ILS 9	907-½ 200 (200-½)			
S-LOC 9	1220-½ 513 (600-½)		1220-1 513 (600-1)	
CIRCLING	1220-1 508 (600-1)		1300-1½ 588 (600-1½) 1320-2 608 (700-2)	

ELEV 712	TDZE 707
----------	----------

MIRL Rwy 18-36
HIRL Rwy 15-33 and 9-27
REIL Rwy 15, 18, 27, and 36
FAF to MAP 6.1 NM

Knots	60	90	120	150	180
Min:Sec	6:06	4:04	3:03	2:26	2:02