

TOMSN EIGHT ARRIVAL
(TOMSN, TOMSN8) 30JAN20

(TOMSN, TOMSN8) 23334
TOMSN EIGHT ARRIVAL

AL-9077 (FAA)

DENVER, COLORADO

DENVER APP CON
119.3 307.3
APA ATIS
120.3
BJC ATIS
126.25
CFO ATIS
119.025
DEN D-ATIS ARR
125.6 379.9
KBKF ATIS*
119.675 259.3

HAYDEN
115.6 CHE
Chan 103

LARAMIE
117.6 LAR
Chan 123

CHEYENNE
113.1 CYS
Chan 78

GILL
114.2 GLL
Chan 89

MILE HIGH
114.7 DVV
Chan 94

DENVER
117.9 DEN
Chan 126

FALCON
116.3 FGF
Chan 110

MEEKER
115.2 EKR
Chan 99

KREMMLING
113.8 RLG
Chan 85

JEFFCO
115.4 BJC
Chan 101

GOULL
DME required for GOULL
holding pattern.

**TOMSN
VERTICAL NAVIGATION
PLANNING INFORMATION**

Turbojets landing DEN:
Expect FL190 250K
or as assigned by ATC.

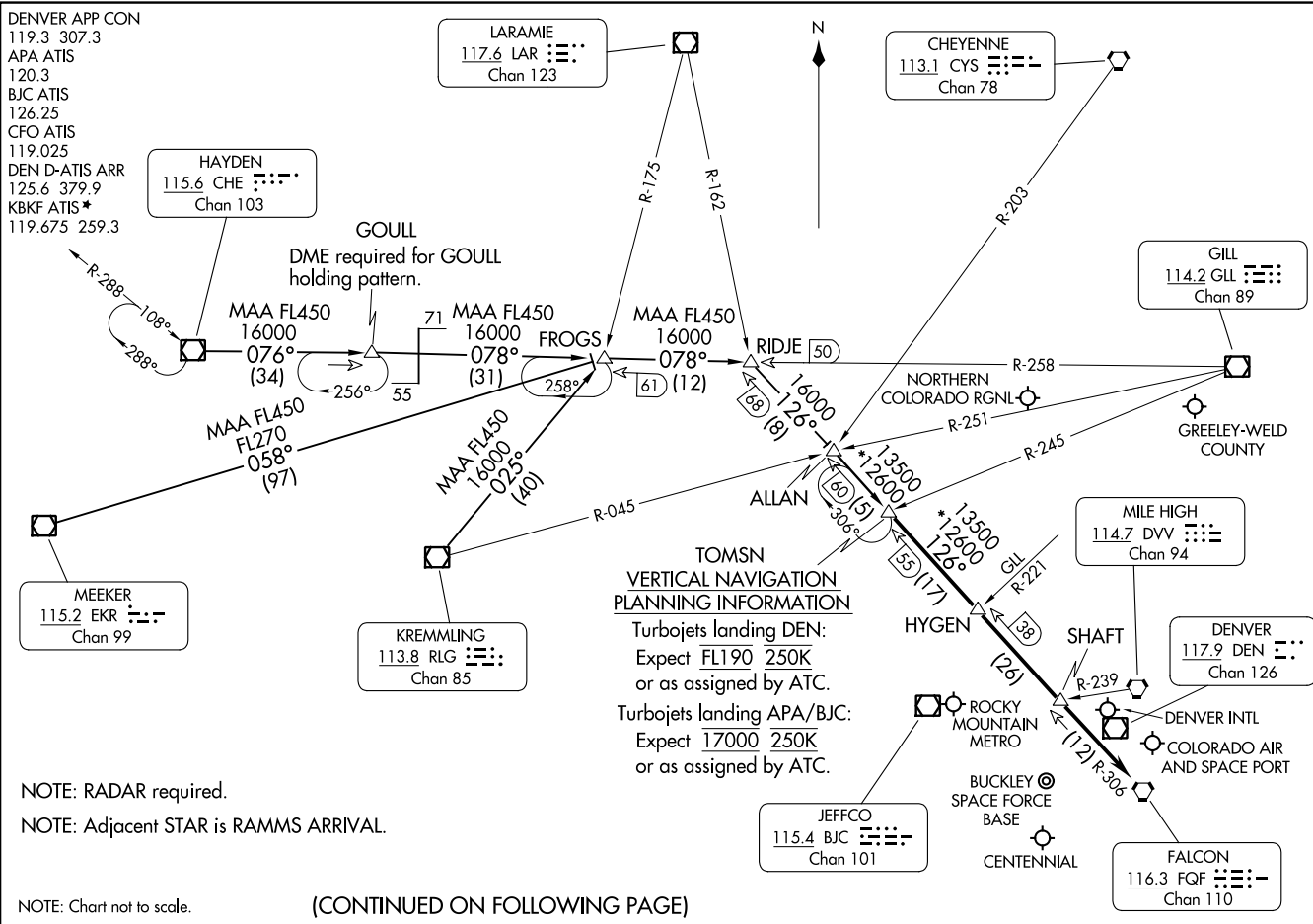
Turbojets landing APA/BJC:
Expect 17000 250K
or as assigned by ATC.

NOTE: RADAR required.

NOTE: Adjacent STAR is RAMMS ARRIVAL.

NOTE: Chart not to scale.

(CONTINUED ON FOLLOWING PAGE)



ARRIVAL ROUTE DESCRIPTION

HAYDEN TRANSITION (CHE.TOMSN8): From over CHE VOR/DME on CHE R-076 and GLL R-258 to RIDJE, then on FQF R-306 to TOMSN. Thence. . . .

KREMLING TRANSITION (RLG.TOMSN8): From over RLG VOR/DME on RLG R-025 and GLL R-258 to RIDJE, then on FQF R-306 to TOMSN. Thence. . . .

MEEKER TRANSITION (EKR.TOMSN8): From over EKR VOR/DME on EKR R-058 and GLL R-258 to RIDJE, then on FQF R-306 to TOMSN. Thence. . . .

. . . .from over TOMSN on FQF R-306 to FQF VORTAC. Expect RADAR vectors to the final approach course at or before FQF VORTAC.

SW-1, 22 FEB 2024 to 21 MAR 2024

SW-1, 22 FEB 2024 to 21 MAR 2024