

PLAINS ONE DEPARTURE  
(PLAIN1.DEN) 30JAN20

PLAINS ONE DEPARTURE  
23334

AL-5715 (FAA)

CENTENNIAL (A/P)  
DENVER, COLORADO

DENVER DEP CON  
132.75 269.3  
ATIS  
120.3  
CLNC DEL  
128.6

**TOP ALTITUDE:  
ASSIGNED BY ATC**

AKRON  
114.4 AKO  
Chan 91

HAYES CENTER  
117.7 HCT  
Chan 124

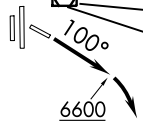
MC COOK  
115.3 MCK  
Chan 100

THURMAN  
112.9 TXC  
Chan 76

GOODLAND  
115.1 GLD  
Chan 98

GARDEN CITY  
113.3 GCK  
Chan 80

DENVER  
117.9 DEN  
Chan 126



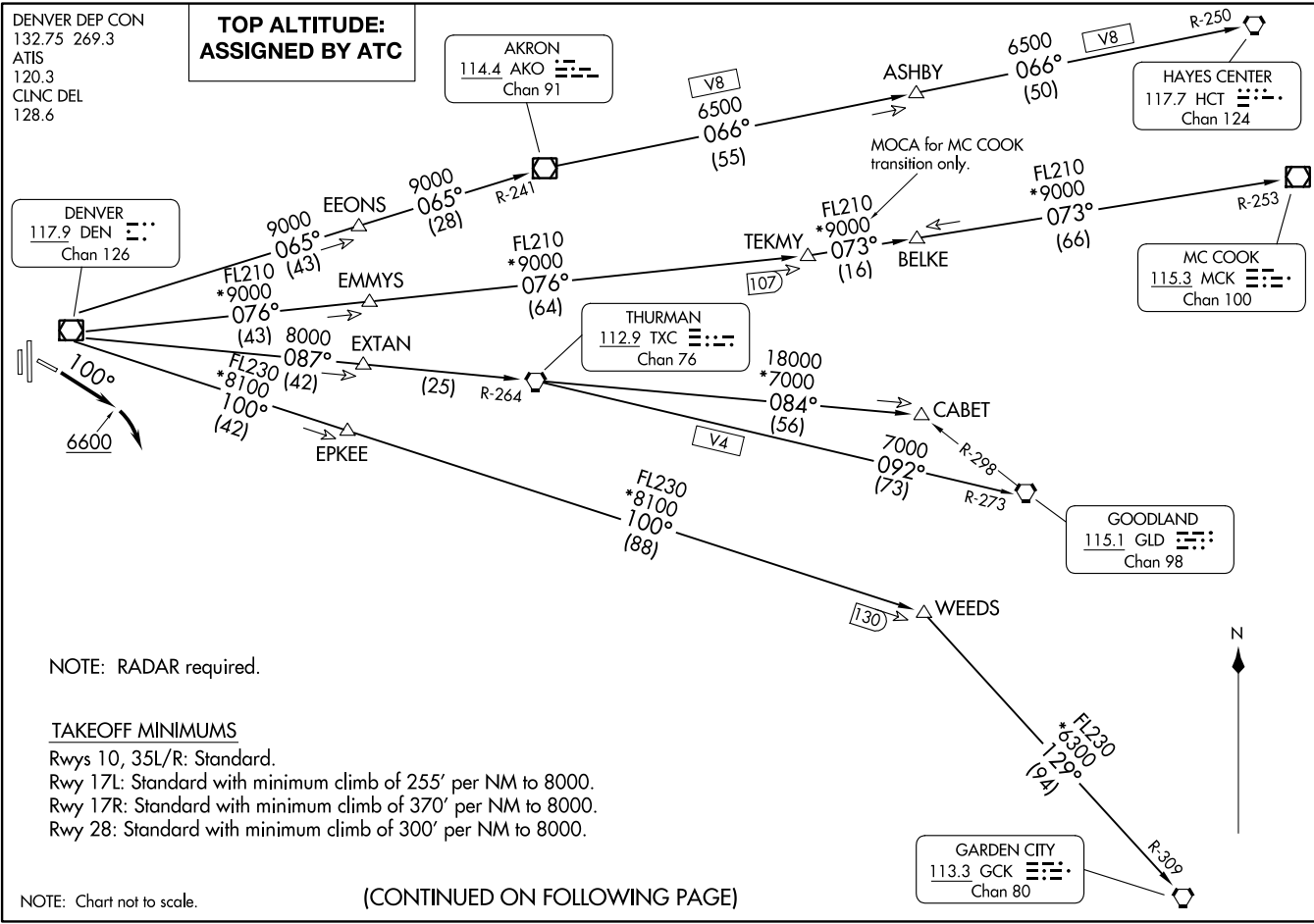
NOTE: RADAR required.

TAKEOFF MINIMUMS

- Rwys 10, 35L/R: Standard.
- Rwy 17L: Standard with minimum climb of 255' per NM to 8000.
- Rwy 17R: Standard with minimum climb of 370' per NM to 8000.
- Rwy 28: Standard with minimum climb of 300' per NM to 8000.

NOTE: Chart not to scale.

(CONTINUED ON FOLLOWING PAGE)





DEPARTURE ROUTE DESCRIPTION

TAKEOFF ALL RUNWAYS: Fly assigned heading and altitude for RADAR vectors to assigned route. Expect filed altitude 10 minutes after departure.

RUNWAY 10: Climb on heading 100° to 6600 before turning right.

LOST COMMUNICATIONS: If no transmissions are received within one minute after departure, maintain assigned heading until 7000 feet, then climb to filed altitude via direct DEN VOR/DME, thence via assigned transition. If filed altitude is above 10000 feet, cross DEN VOR/DME at or above 11000 feet.

AKRON TRANSITION (PLAIN1.AKO): From over DEN VOR/DME on DEN R-065 and AKO R-241 to AKO VOR/DME.

ASHBY TRANSITION (PLAIN1.ASHBY): From over DEN VOR/DME on DEN R-065 and AKO R-241 to AKO VOR/DME, then on AKO R-066 and HCT R-250 to ASHBY.

BELKE TRANSITION (PLAIN1.BELKE): From over DEN VOR/DME on DEN R-076 and MCK R-253 to BELKE INT.

CABET TRANSITION (PLAIN1.CABET): From over DEN VOR/DME on DEN R-087 and TXC R-264 to TXC VORTAC, then on TXC R-084 to CABET.

GARDEN CITY TRANSITION (PLAIN1.GCK): From over DEN VOR/DME on DEN R-100 and GCK R-309 to GCK VORTAC.

GOODLAND TRANSITION (PLAIN1.GLD): From over DEN VOR/DME on DEN R-087 and TXC R-264 to TXC VORTAC, then on TXC R-092 and GLD R-273 to GLD VORTAC.

HAYES CENTER TRANSITION (PLAIN1.HCT): From over DEN VOR/DME on DEN R-065 and AKO R-241 to AKO VOR/DME, then on AKO R-066 and HCT R-250 to HCT VORTAC.

MCCOOK TRANSITION (PLAIN1.MCK): From over DEN VOR/DME on DEN R-076 to TEKMY, then on MCK R-253 to MCK VOR/DME.

THURMAN TRANSITION (PLAIN1.TXC): From over DEN VOR/DME on DEN R-087 and TXC R-264 to TXC VORTAC.

WEEDS TRANSITION (PLAIN1.WEEDS): From over DEN VOR/DME on DEN R-100 to WEEDS.

SW-1, 22 FEB 2024 to 21 MAR 2024

SW-1, 22 FEB 2024 to 21 MAR 2024