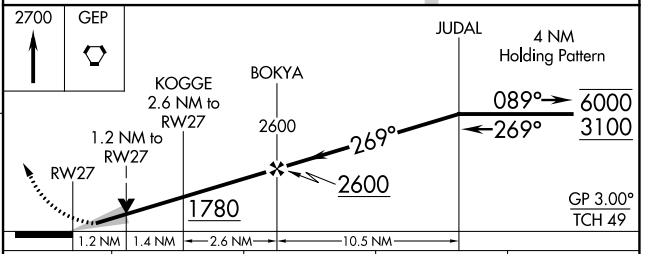
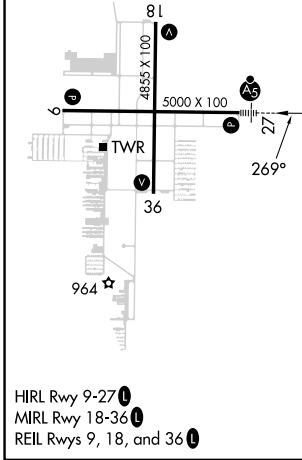
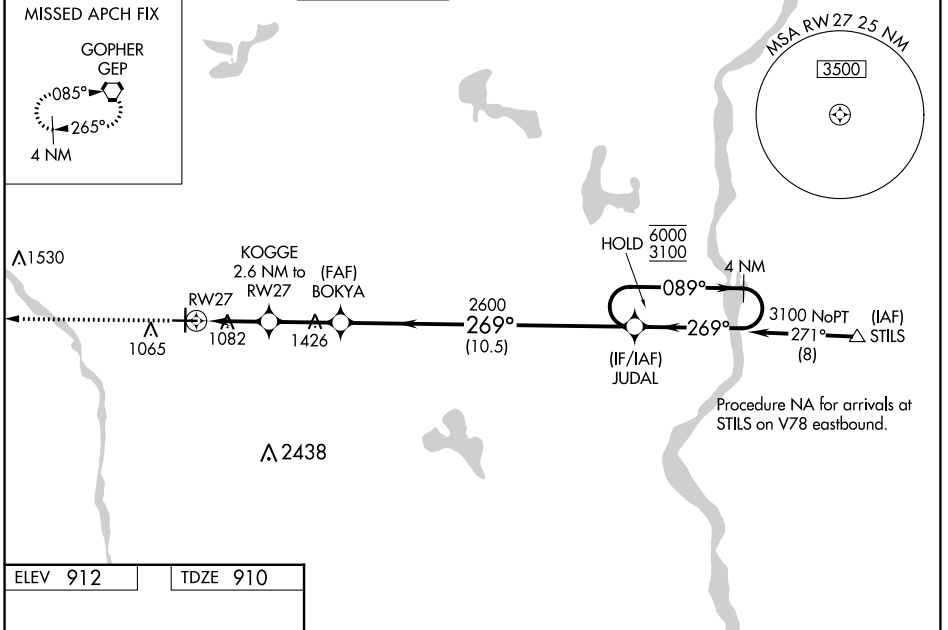


WAAS CH 78300	APP CRS 269°	Rwy Idg 5000 TDZE 910 Apt Elev 912
-------------------------	------------------------	---

RNAV (GPS) RWY 27

ANOKA COUNTY/BLAINE (JANES FLD) (A.N.E.)

RNP APCH - GPS.		<p>▼ For uncompensated Baro-VNAV systems, LNAV/VNAV NA below -16°C or above 54°C. When local altimeter setting not received, use Crystal altimeter setting: increase LPV DA to 1131 feet; increase LNAV/VNAV DA to 1361 feet and all visibilities 1/8 SM, increase all MDA 40 feet and visibility Cat C/D 1/4 SM, and Circling visibility Cat D 1/4 SM. Baro-VNAV and VDP NA when using Crystal altimeter setting. For inop ALS when using Crystal altimeter setting, increase LNAV Cat C/D visibility to 1 3/8 SM.</p>		<p>MALSRL</p>		<p>MISSED APPROACH: Climb to 2700 direct GEP VORTAC and hold, continue climb-in-hold to 2700.</p>	
ATIS 120.625	MINNEAPOLIS APP CON 126.5 335.65	ANOKA TOWER* 132.4 (CTAF)	GND CON 121.85	CLNC DEL 121.3	CLNC DEL 121.85 (When twr closed)	UNICOM 122.95	



CATEGORY	A	B	C	D
LPV DA	1110-1/2 200 (200-1/2)			
LNAV/VNAV DA	1340-3/4 430 (500-3/4)			
LNAV MDA	1340-1/2 430 (500-1/2)	1340-3/4 430 (500-3/4)		
CIRCLING	1400-1 488 (500-1)	1420-1 1/2 508 (600-1 1/2)	1580-2 668 (700-2)	

NC-1, 22 FEB 2024 to 21 MAR 2024

NC-1, 22 FEB 2024 to 21 MAR 2024