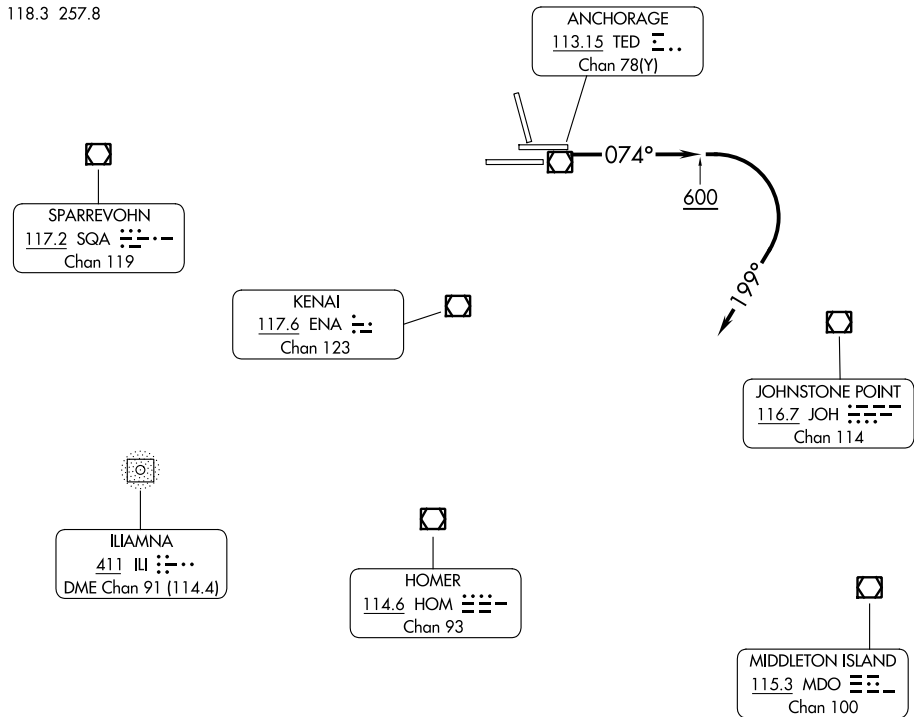


POTTER ONE DEPARTURE

TED STEVENS ANCHORAGE INTL (ANC) (PANC)
AL-1500 (FAA) ANCHORAGE, ALASKA

ANCHORAGE DEP CON
126.4 270.25
D-ATIS
135.5
CLNC DEL
119.4 323.1
GND CON
121.9 338.25
ANCHORAGE TOWER
118.3 257.8

**TOP ALTITUDE:
4000**



AK, 25 JAN 2024 to 21 MAR 2024

AK, 25 JAN 2024 to 21 MAR 2024

TAKEOFF MINIMUMS

Rwy 7L: 300-1½ or standard with minimum climb of 255 feet per NM to 400.

Rwy 7R: 300-1 or standard with minimum climb of 285 feet per NM to 400.

NOTE: RADAR required.

NOTE: Maximum procedure airspeed limited to 200K.

NOTE: Chart not to scale.



DEPARTURE ROUTE DESCRIPTION

TAKEOFF RUNWAYS 7L/R: Climb heading 074° to 600, then climbing right turn on heading 199°. Thence . . .

. . . expect RADAR vectors to assigned route or depicted fix. Maintain 4000.

Expect further clearance to filed altitude within 10 minutes after departure.

POTTER ONE DEPARTURE

ANCHORAGE, ALASKA
TED STEVENS ANCHORAGE INTL (ANC) (PANC)