

| | | | |
|--|------------------------|-----------------------------|---|
| WAAS CH 61217 W19A | APP CRS 194° | Rwy Idg TDZE Apt Elev | 5701 937 956 |
|--|------------------------|-----------------------------|---|

RNAV (GPS) RWY 19

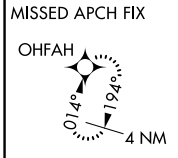
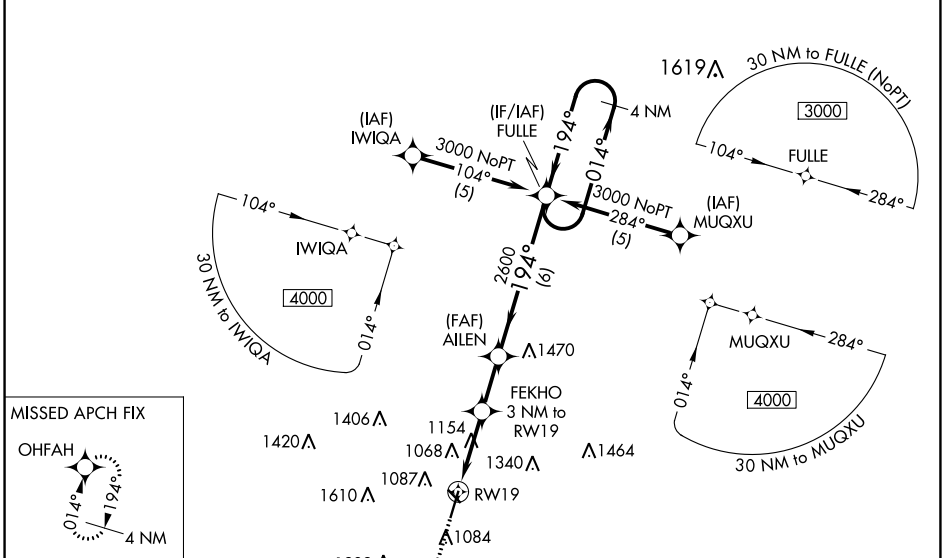
AMES MUNI (AMW)

RNP APCH - GPS.

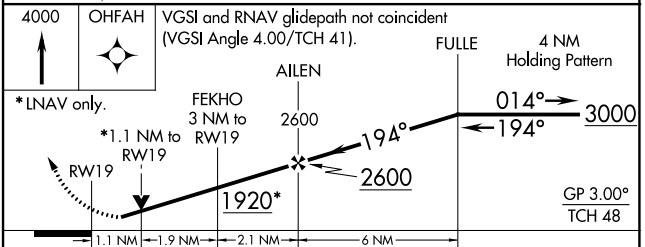
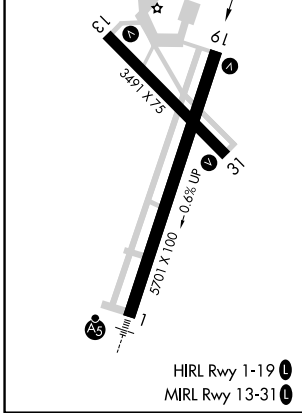
⚠ Baro-VNAV and VDP NA when using Ankeny altimeter setting. For uncompensated Baro-VNAV systems, LNAV/VNAV NA below -16°C or above 54°C. Rwy 19 helicopter visibility reduction below $\frac{3}{4}$ SM NA. When local altimeter setting not received, use Ankeny altimeter setting and increase LPV DA to 1239 feet and all visibilities $\frac{1}{2}$ SM. Increase LNAV/VNAV DA to 1434 feet; increase all MDAs 60 feet and LNAV visibility Cat C $\frac{1}{4}$ SM.

⚠ MISSED APPROACH: Climb to 4000 direct OHFAH and hold.

| | | | |
|------------------------|---|--------------------------|--|
| ASOS 132.025 | DES MOINES APP CON 123.9 307.15 | CLNC DEL 126.0 | UNICOM 122.7 (CTAF) 📻 |
|------------------------|---|--------------------------|--|



| | |
|----------|----------|
| ELEV 956 | TDZE 937 |
|----------|----------|



| CATEGORY | A | B | C | D |
|--------------|---|---|---|----|
| LPV DA | 1187-1 250 (300-1) | | | NA |
| LNAV/VNAV DA | 1382-1 $\frac{3}{8}$ 445 (500-1 $\frac{3}{8}$) | | | NA |
| LNAV MDA | 1420-1 483 (500-1) | | 1420-1 $\frac{3}{8}$ 483 (500-1 $\frac{3}{8}$) | NA |