


WAAS CH <b>56302</b> <b>W19A</b>	APP CRS <b>191°</b>	Rwy Idg <b>8500</b> TDZE <b>280</b> Apt Elev <b>285</b>
----------------------------------------	------------------------	---------------------------------------------------------------

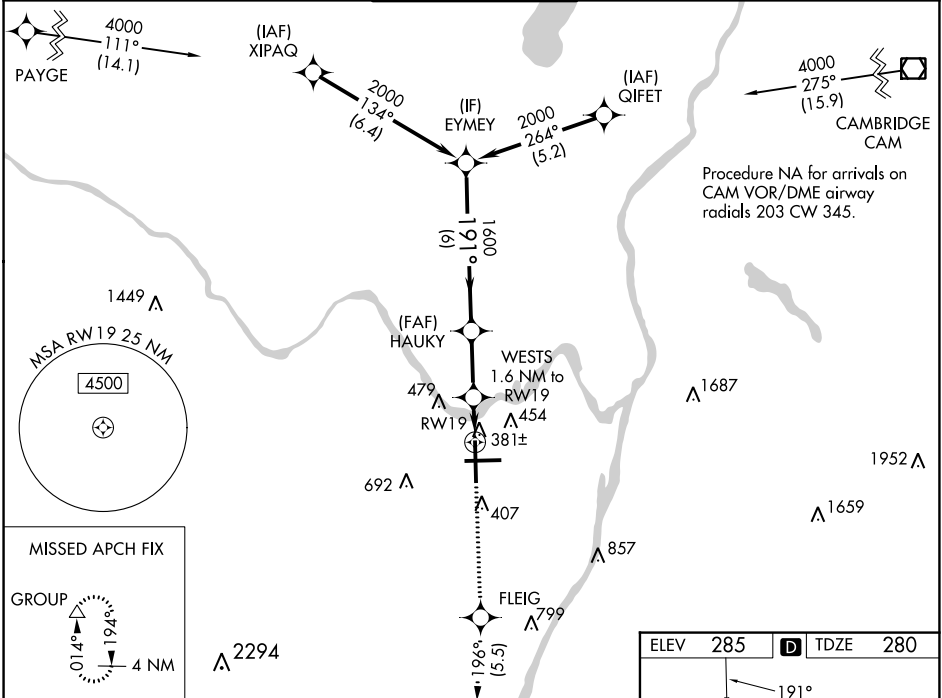
# RNAV (GPS) Y RWY 19

ALBANY INTL (ALB)

**⚠** For uncompensated Baro-VNAV systems, LNAV/VNAV NA below -5°C (23°F) or above 54°C (130°F). For inop ALS, increase LNAV/VNAV all Cats visibility to RVR 4500. Circling NA west of Rwy 1-19. Circling Rwy 10 NA at night. DME/DME RNP-0.3 NA.

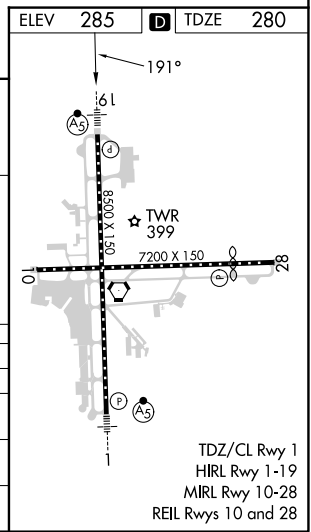
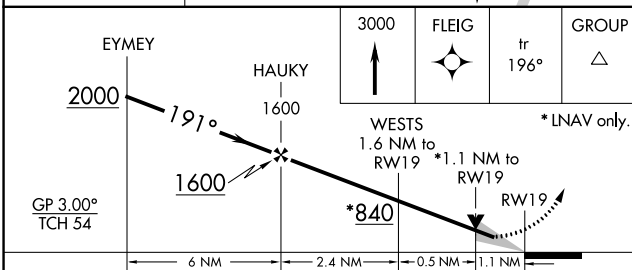
**MALSR**  
 MISSED APPROACH: Climb to 3000 direct FLEIG and on track 196° to GROUP and hold.

D-ATIS <b>120.45</b>	ALBANY APP CON <b>132.825 307.2</b>	ALBANY TOWER <b>119.5 257.8</b>	GND CON <b>121.7 348.6</b>	CLNC DEL <b>127.50</b>
-------------------------	----------------------------------------	------------------------------------	-------------------------------	---------------------------



NE-2, 22 FEB 2024 to 21 MAR 2024

NE-2, 22 FEB 2024 to 21 MAR 2024



CATEGORY	A	B	C	D
LPV DA	480/18 200 (200-½)			
LNAV/VNAV DA	590/24 310 (400-½)			
LNAV MDA	680/24 400 (400-½)	680/35 400 (400-⅝)		
<b>C</b> CIRCLING	820-1 535 (600-1)	860-1½ 575 (600-½)	960-2¼ 675 (700-2¼)	

TDZ/CL Rwy 1  
HIRL Rwy 1-19  
MIRL Rwy 10-28  
REIL Rwy 10 and 28