

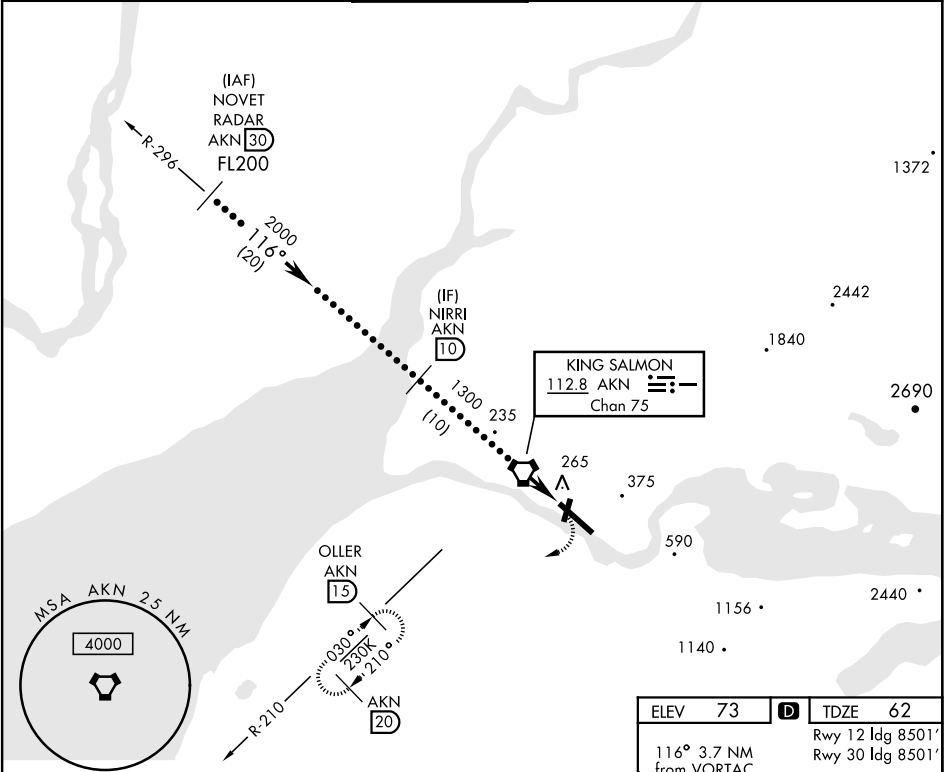
KING SALMON, ALASKA

HI-VOR or TACAN Z RWY 12

VORTAC AKN 112.8 Chan 75	APCH CRS 116°	Rwy ldg 8501 TDZE 62 Arpt Elev 73	AL-1237 [USAF]	KING SALMON (PAKN)
--	-------------------------	--	----------------	--------------------

DME required. RADAR required for procedure entry.		SSALR 	MISSED APPROACH: Climbing right turn to 3000 on heading 238° and AKN VORTAC R-210 to OLLER/15 DME and hold.
* When ALS inop, increase vis to 1 1/8 miles. When control tower closed, increase RVR to 50. -31° C			

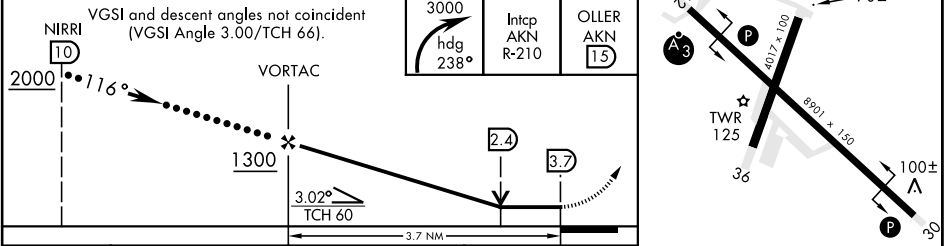
ATIS 128.8	ANCHORAGE CENTER 124.8 354.0	TOWER ★ 118.3 279.5	GND CON 121.9	CTAF 121.90 352.05	UNICOM 122.95
----------------------	--	-------------------------------	-------------------------	------------------------------	-------------------------



AK, 25 JAN 2024 to 21 MAR 2024

AK, 25 JAN 2024 to 21 MAR 2024

EMERG SAFE ALT 100 NM 9900



ELEV 73	D	TDZE 62	Rwy 12 ldg 8501'	Rwy 30 ldg 8501'
116° 3.7 NM from VORTAC				
CATEGORY	C	D	E	
S-12*	520/45	458	(500-7%)	
CIRCLING	580-1 1/2 507 (600-1 1/2)	900-2 3/4 827 (900-2 3/4)	960-3 887 (900-3)	HIRL Rwy 12-30 MIRL Rwy 18-36

KING SALMON, ALASKA 58°41'N-156°39'W KING SALMON (PAKN)

HI-VOR or TACAN Z RWY 12

