

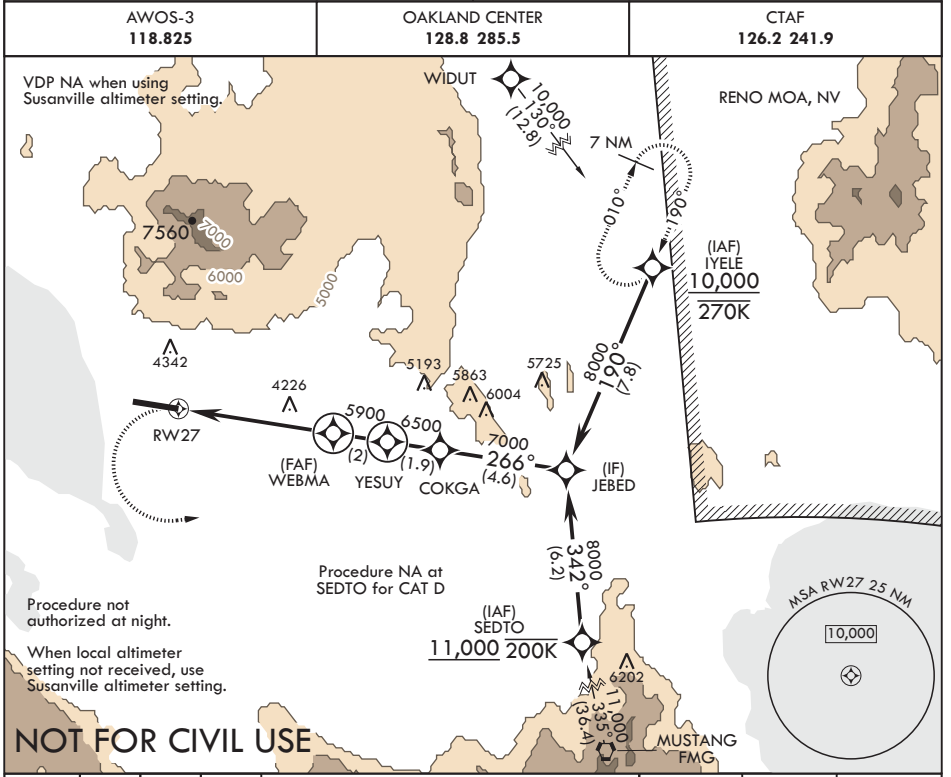
RNAV (GPS) RWY 27

APCH CRS	Rwy Idg	10,000
266°	TDZE	4012
	Arprt Elev	4012

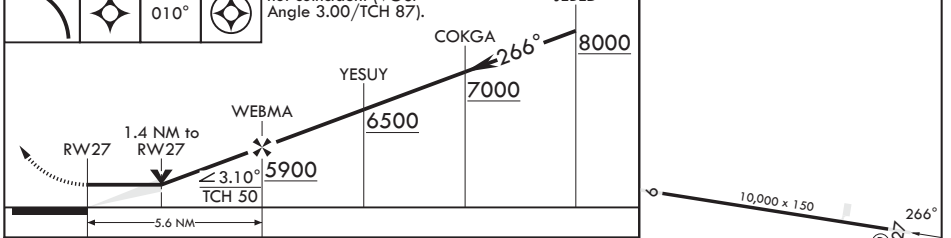
AL-6624 (USA)

AMEDEE AAF (KAHC)

RNP APCH - GPS.	MISSED APPROACH: Climbing left turn to 10,000 direct JEBED and track 010° to IYELE and hold, continue climb-in-hold to 10,000. When authorized by ATC, climb-in-hold to 14,000.
<p>⚠ * Circling NA for CAT CD north of Rwy 9-27.</p> <p>⚠ NA</p>	



10,000	JEBED	tr	IYELE	VGSI and descent angles not coincident (VGSI Angle 3.00/TCH 87).	JEBED	ELEV 4012	TDZE 4012
--------	-------	----	-------	--	-------	-----------	-----------



CATEGORY	A	B	C	D
LNAV MDA	4540-1	528 (600-1)	4540-1½	528 (600-1½)
CIRCLING	4540-1	4680-1	4680-1¾	4680-2
	528 (600-1)	668 (700-1)	668 (700-1¾)	668 (700-2)
SUSANVILLE ALTIMETER SETTING MINIMUMS				
LNAV MDA	4620-1	608 (700-1)	4620-2	608 (700-2)
CIRCLING	4620-1	4760-1	4760-2¼	4760-2½
	608 (700-1)	748 (800-1)	748 (800-2¼)	748 (800-2½)

SW-2, 22 FEB 2024 to 21 MAR 2024

SW-2, 22 FEB 2024 to 21 MAR 2024