

WAAS CH 90328 W08A	APP CRS 082°	Rwy Idg 6002 TDZE 137 Apt Elev 146
--	------------------------	---

RNAV (GPS) Z RWY 8

AUGUSTA RGNL AT BUSH FLD (AGS)

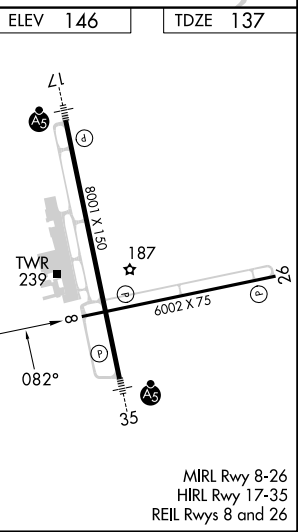
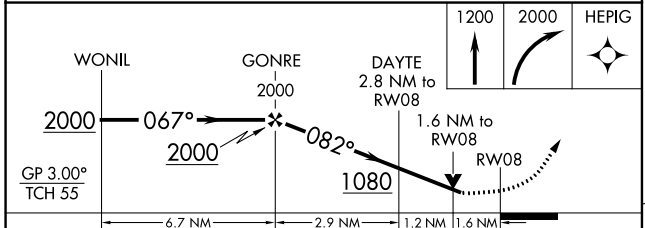
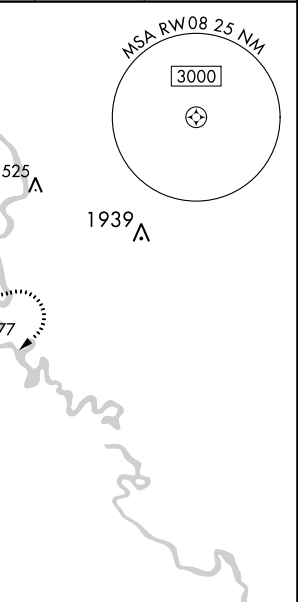
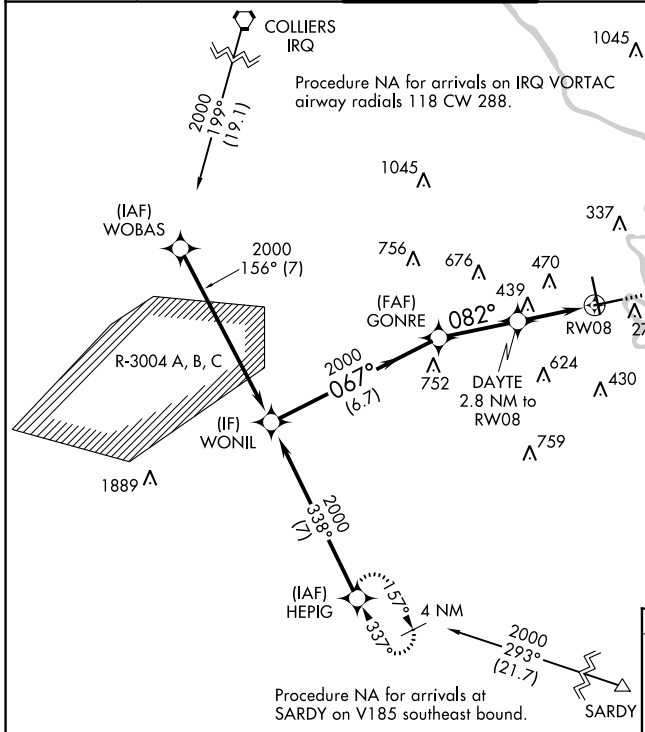
RNP APCH - GPS.

▼ Rwy 8 helicopter visibility reduction below 3/4 SM NA. For uncompensated Baro-VNAV systems, LNAV/VNAV NA below -6°C or above 54°C.

▲

MISSED APPROACH: Climb to 1200 then climbing right turn to 2000 direct HEPIG and hold.

ATIS 132.75	AUGUSTA APP CON ★ 126.8 270.3	AUGUSTA TOWER ★ 118.7 (CTAF) 239.3	GND CON 121.9 348.6	CLNC DEL 118.65	UNICOM 122.95
-----------------------	---	---	-------------------------------	---------------------------	-------------------------



CATEGORY	A	B	C	D
LPV DA		669-1½	532 (600-1½)	
LNAV/VNAV DA		693-1⅝	556 (600-1⅝)	
LNAV MDA	700-1	563 (600-1)	700-1⅝	563 (600-1⅝)
CIRCLING	760-1	780-1	780-1¾	940-2½
	614 (700-1)	634 (700-1)	634 (700-1¾)	794 (800-2½)

MIRL Rwy 8-26
HIRL Rwy 17-35
REIL Rwy 8 and 26

SE-4, 22 FEB 2024 to 21 MAR 2024

SE-4, 22 FEB 2024 to 21 MAR 2024