

APP CRS	Rwy Idg	N/A
<b>210°</b>	TDZE	N/A
	Apt Elev	<b>1635</b>

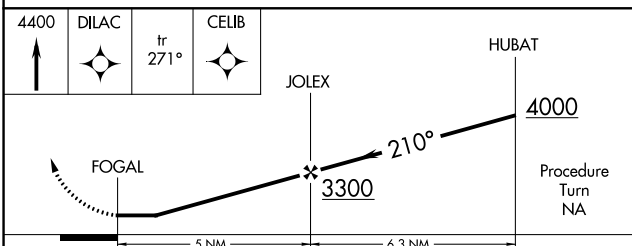
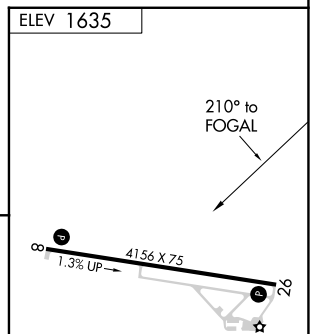
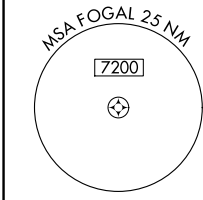
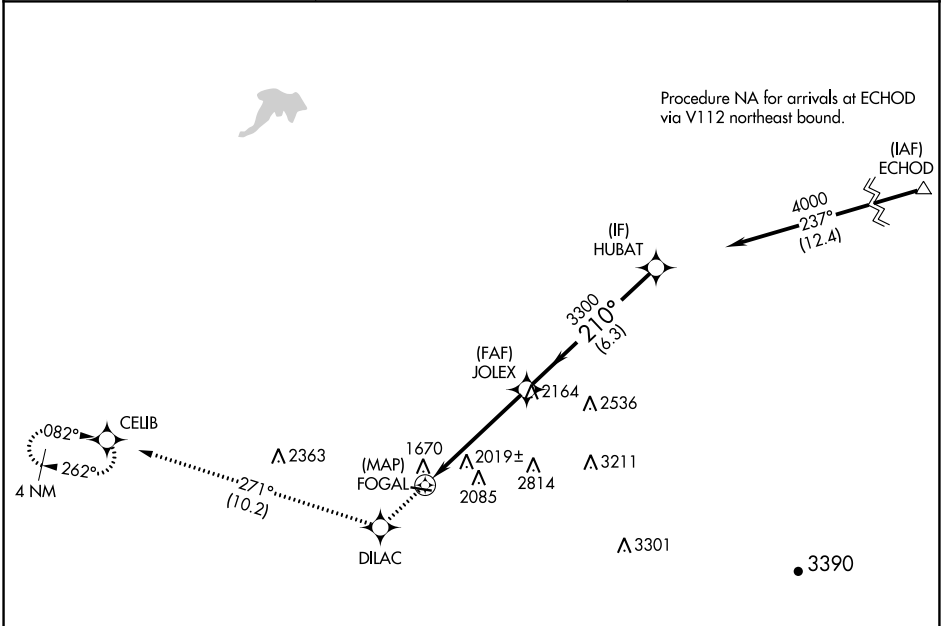
# RNAV (GPS)-A

LEXINGTON (9S9)

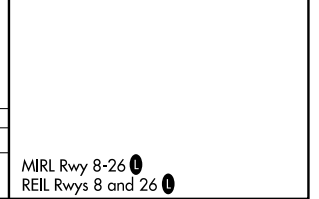
**NA** When local altimeter setting not received, use Hermiston altimeter setting and increase all MDAs 220 feet and increase Cat A/B visibility ¼ SM. Procedure NA at night. DME/DME RNP-0.3 NA. Helicopter visibility reduction below 1 SM NA.

MISSED APPROACH: Climb to 4400 direct DILAC and via 271° track to CELIB and hold.

AWOS-3 <b>134.475</b>	SEATTLE CENTER <b>132.6 269.35</b>	CTAF <b>122.9</b>
--------------------------	---------------------------------------	----------------------



CATEGORY	A	B	C	D
CIRCLING	2380-1 745 (800-1)	2460-1¼ 825 (900-1¼)	2700-3 1065 (1100-3)	3180-3 1545 (1600-3)



NW-1, 22 FEB 2024 to 21 MAR 2024

NW-1, 22 FEB 2024 to 21 MAR 2024