

WAAS CH <b>56638</b> <b>W34A</b>	APP CRS <b>344°</b>	Rwy ldg TDZE <b>1162</b> Apt Elev <b>1162</b>	<b>3400</b>
----------------------------------------	------------------------	-----------------------------------------------------	-------------

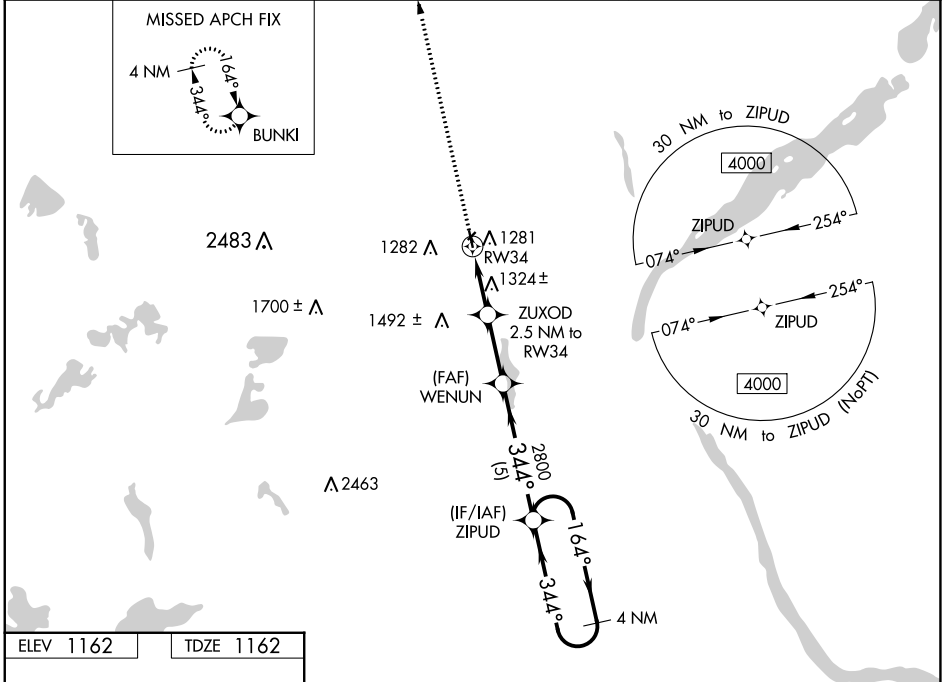
# RNAV (GPS) RWY 34

SISSETON MUNI (8D3)

**⚠** Circling NA to Rws 4 and 22. Baro-VNAV NA. DME/DME RNP-0.3 NA.  
**⚠** NA Use Wheaton altimeter setting, when not received, use Ortonville altimeter setting and increase LPV DA to 1496 feet, LNAV/VNAV DA to 1673 feet and all MDA 20 feet.  
 Increase LPV Cats A/B visibility 1/8 mile.

MISSED APPROACH: Climb to 4000 direct BUNKI and hold, continue climb in hold to 4000.

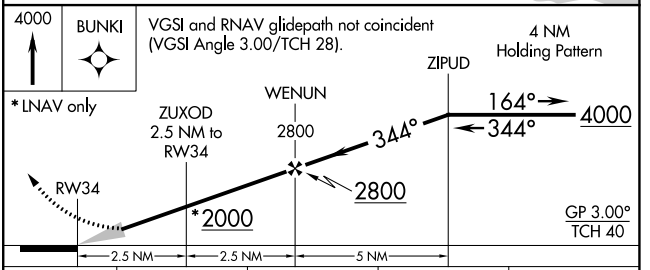
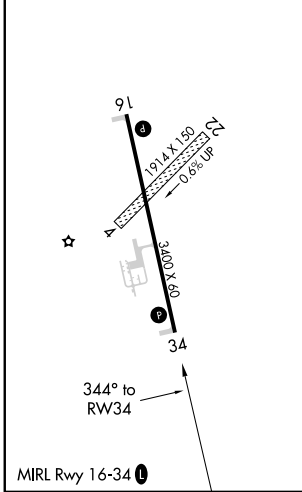
ETH AWOS-3 <b>118.775</b>	MINNEAPOLIS CENTER <b>128.5 306.2</b>	CTAF <b>122.9</b>
------------------------------	------------------------------------------	----------------------



NC-1, 22 FEB 2024 to 21 MAR 2024

NC-1, 22 FEB 2024 to 21 MAR 2024

ELEV 1162	TDZE 1162
-----------	-----------



CATEGORY	A	B	C	D
LPV DA	1478-1	316 (400-1)		NA
LNAV/VNAV DA	1655-1¾	493 (500-1¾)		NA
LNAV MDA	1640-1	478 (500-1)		NA
<b>C</b> CIRCLING	1660-1 498 (500-1)	1700-1 538 (600-1)		NA