

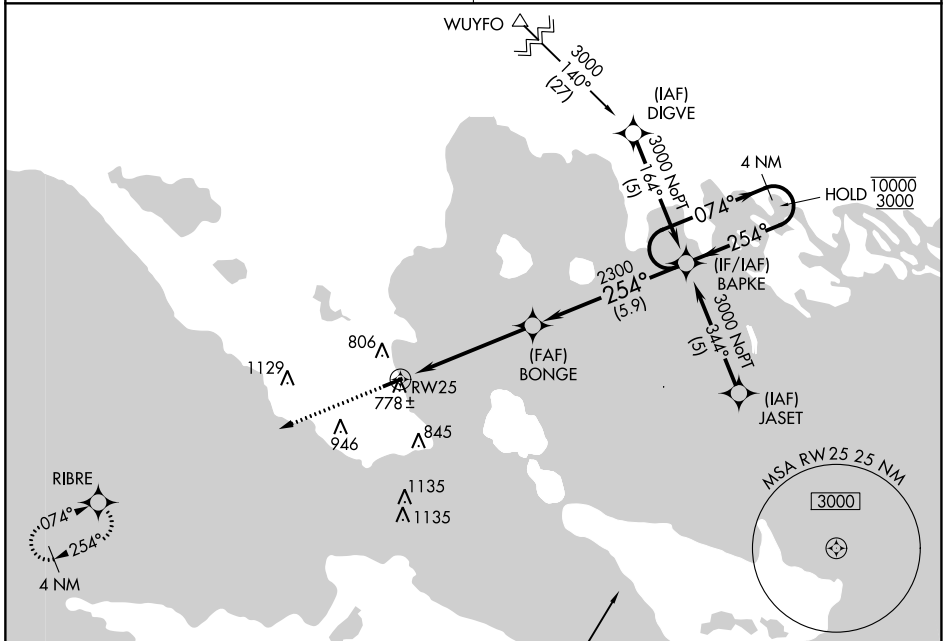
APP CRS	Rwy Idg	<b>3800</b>
<b>254°</b>	TDZE	<b>623</b>
	Apt Elev	<b>624</b>

# RNAV (GPS) RWY 25

MACKINAC COUNTY (83D)

RNP APCH.	<p>⚠ Circling Rwy 7 NA at night.                  ⚠ NA Circling NA at night south of Rwy 7-25.                  Rwy 25 helicopter visibility reduction below ¾ SM NA.</p>	MISSED APPROACH: Climb to 3000 direct RIBRE and hold.
-----------	-----------------------------------------------------------------------------------------------------------------------------------------------------------------------------------	-------------------------------------------------------

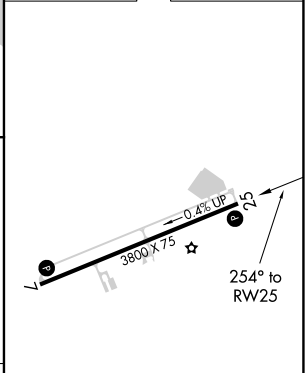
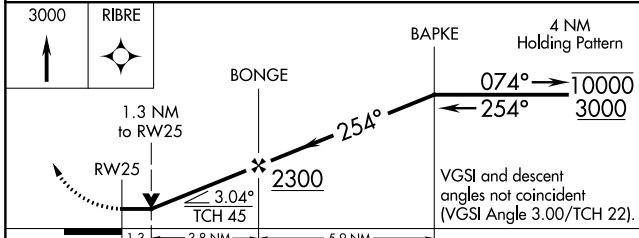
MINNEAPOLIS CENTER	UNICOM
<b>134.6 354.05</b>	<b>122.7 (CTAF) 0</b>



Procedure NA for arrival on PLN VORTAC airway radial 023.

PELLSTON PLN

ELEV	624	TDZE	623
------	-----	------	-----



CATEGORY	A	B	C	D
LNVA MDA	1040-1	417 (500-1)	1040-1½ 417 (500-1½)	NA
CIRCLING	1260-1	636 (700-1)	1300-2 676 (700-2)	NA

MIRL Rwy 7-25 0  
 REIL Rwy 7 and 25 0

EC-1, 22 FEB 2024 to 21 MAR 2024

EC-1, 22 FEB 2024 to 21 MAR 2024