

APP CRS **097°**
 Rwy Idg **3795**
 TDZE **881**
 Apt Elev **895**

RNAV (GPS) RWY 10

MARLETTE TOWNSHIP (77G)

RNP APCH - GPS.

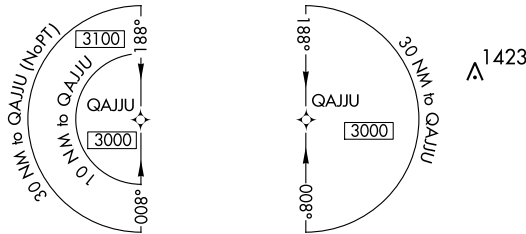
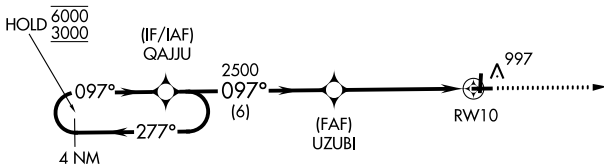
▽ Rwy 10 helicopter visibility reduction below 1 SM NA. Straight-in Rwy 10 NA at night,
▲ NA Circling Rwy 10, 19 NA at night. Use Caro altimeter setting, when not received, use Bad
 Axe altimeter setting and increase all MDAs 20 feet and LNAV visibility Cat C/D ½ SM.

MISSED APPROACH:
 Climb to 2700 direct
 UYULU and hold.

CFS AWOS-3
119.275

CLEVELAND CENTER
127.7 290.425

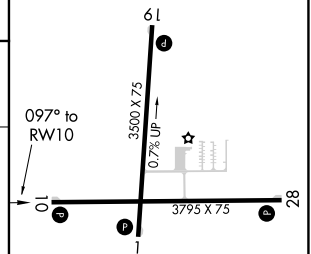
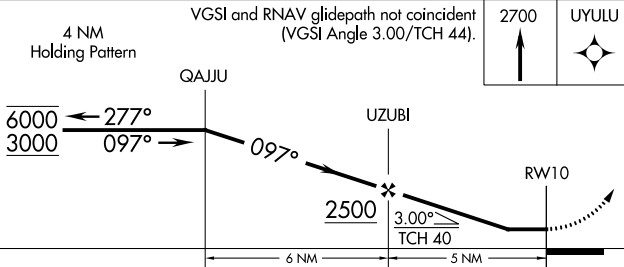
UNICOM
122.8 (CTAF) 0



EC-1, 22 FEB 2024 to 21 MAR 2024

EC-1, 22 FEB 2024 to 21 MAR 2024

ELEV 895 | TDZE 881



CATEGORY	A	B	C	D
LNAV MDA	1420-1	539 (600-1)	1420-1½	539 (600-1½)
C CIRCLING	1460-1	565 (600-1)	1460-1½	1560-2 665 (700-2)

MIRL Rwy 1-19 and 10-28 0

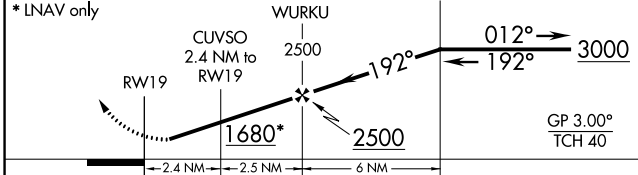
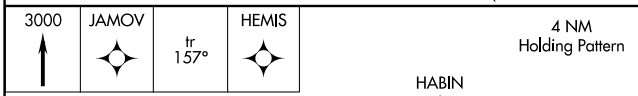
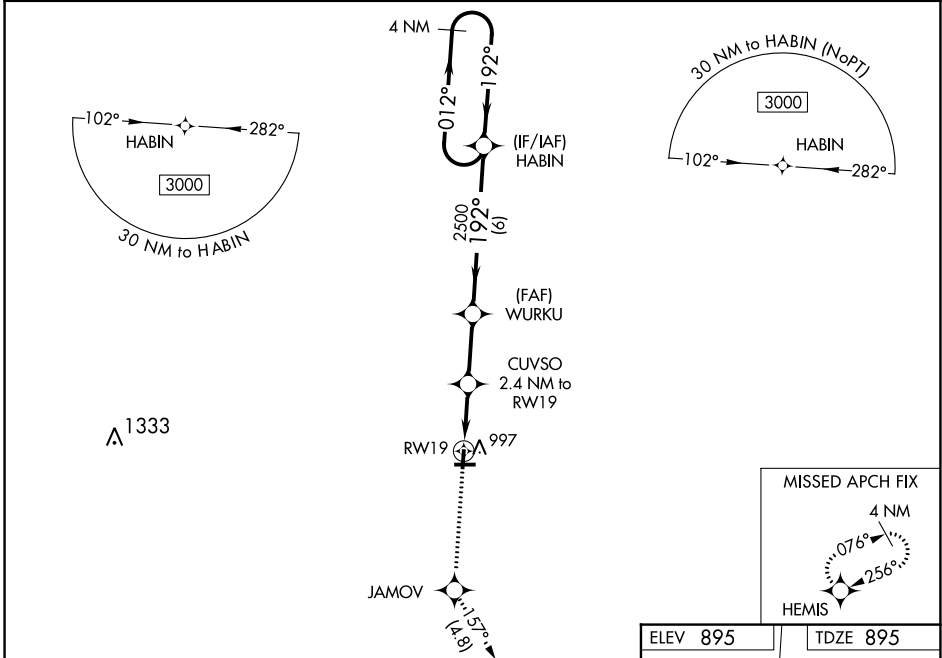
WAAS CH 70421 W19A	APP CRS 192°	Rwy Idg TDZE Apt Elev	3500 895 895
--	------------------------	-----------------------------	---

RNAV (GPS) RWY 19

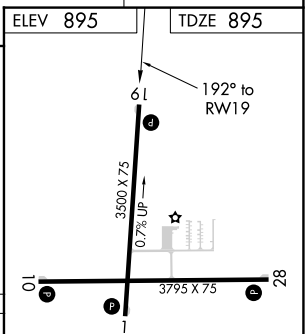
MARLETTE TOWNSHIP (77G)

RNP APCH.	Baro-VNAV NA. Rwy 19 helicopter visibility reduction below 1 SM NA. Use Caro altimeter setting; when not received use Bad Axe altimeter setting and increase LPV DA to 1230 feet; increase LNAV/VNAV DA to 1280 feet; increase all MDA 20 feet and Circling Cat D visibility ¼ SM. Straight-in Rwy 19 NA at night, Circling Rwy 10, 19 NA at night.	MISSED APPROACH: Climb to 3000 direct JAMOV and on track 157° to HEMIS and hold.
-----------	---	---

CFS AWOS-3 119.275	CLEVELAND CENTER 127.7 290.425	UNICOM 122.8 (CTAF) 0
------------------------------	--	---------------------------------



CATEGORY	A	B	C	D
LPV DA		1214-1 1/8	319 (400-1 1/8)	
LNAV/VNAV DA		1264-1 1/4	369 (400-1 1/4)	
LNAV MDA	1340-1	445 (500-1)	1340-1 3/8	445 (500-1 3/8)
C CIRCLING	1460-1	565 (600-1)	1460-1 1/2	1560-2
			565 (600-1 1/2)	665 (700-2)



ELEV 895	TDZE 895
MIRL Rwy 1-19 and 10-28 0	

EC-1, 22 FEB 2024 to 21 MAR 2024

EC-1, 22 FEB 2024 to 21 MAR 2024

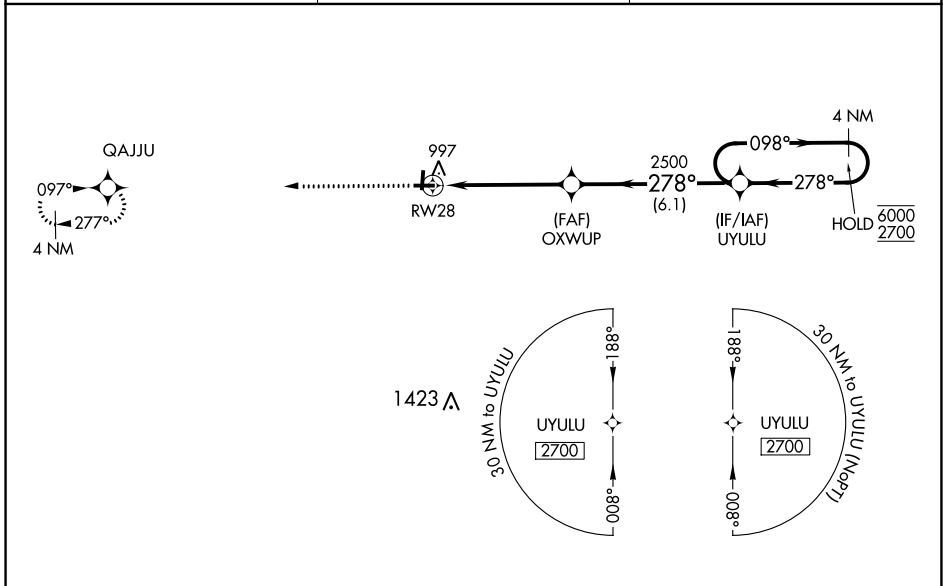
WAAS CH 62944 W28A	APP CRS 278°	Rwy Idg TDZE 881 Apt Elev 895
--	------------------------	---

RNAV (GPS) RWY 28

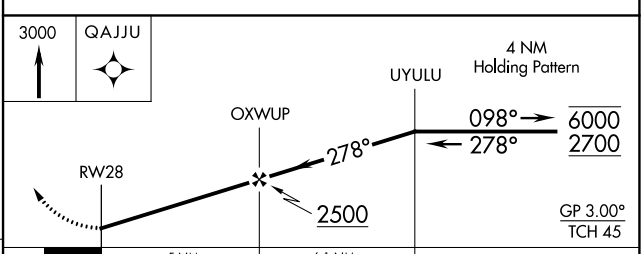
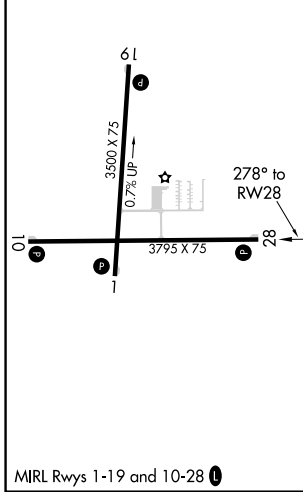
MARLETTE TOWNSHIP (77G)

RNP APCH - GPS.	<p>▼ Rwy 28 helicopter visibility reduction below 3/4 SM NA. Baro-VNAV NA. ▲ NA Use Caro altimeter setting, when not received, use Bad Axe altimeter setting and increase LPV DA to 1216 feet; increase LNAV/VNAV DA to 1279 feet; increase all MDAs 20 feet and Circling visibility Cat D 1/4 SM. Circling Rwy 10, 19 NA at night.</p>	MISSED APPROACH: Climb to 3000 direct QAJJU and hold.
-----------------	--	--

CFS AWOS-3 119.275	CLEVELAND CENTER 127.7 290.425	UNICOM 122.8 (CTAF) 0
------------------------------	--	---------------------------------



ELEV 895	TDZE 881
----------	----------



CATEGORY	A	B	C	D
LPV DA		1199-1	318 (400-1)	
LNAV/VNAV DA		1262-1 1/8	381 (400-1 1/8)	
LNAV MDA	1340-1	459 (500-1)	1340-1 3/8	459 (500-1 3/8)
C CIRCLING	1420-1	525 (600-1)	1420-1 1/2 525 (600-1 1/2)	1560-2 665 (700-2)

EC-1, 22 FEB 2024 to 21 MAR 2024

EC-1, 22 FEB 2024 to 21 MAR 2024