

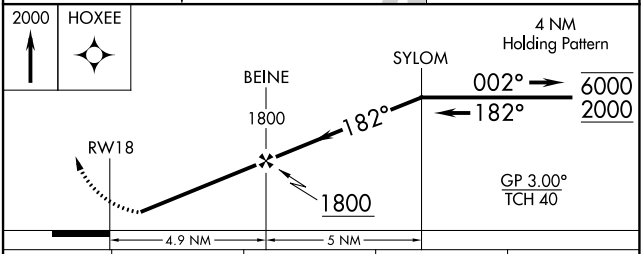
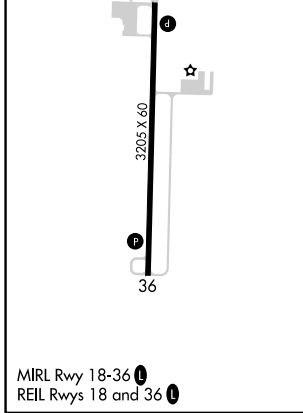
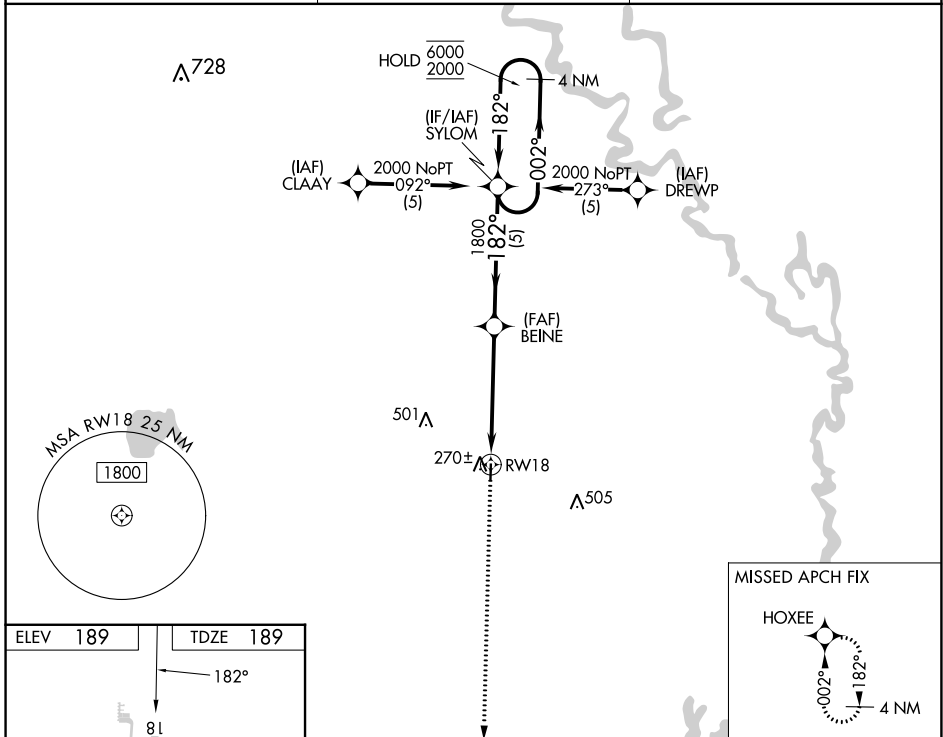
WAAS CH 86344 W 18A	APP CRS 182°	Rwy Idg 3205 TDZE 189 Apt Elev 189
---	------------------------	---

RNAV (GPS) RWY 18

DEWITT MUNI/WHITCOMB FLD (5M1)

RNP APCH - GPS.	<p>▼ Rwy 18 helicopter visibility reduction below 3/4 SM NA. Baro-VNAV NA. Use Stuttgart altimeter setting; when not received, use Pine Bluff altimeter setting and increase LPV DA to 515 feet, LNAV/VNAV DA to 515 feet, and increase all MDAs 20 feet.</p> <p>▲ NA</p>	MISSED APPROACH: Climb to 2000 direct HOXEE and hold.
-----------------	---	---

SGT AWOS-3PT 119.025	MEMPHIS CENTER 135.3 335.8	CTAF 122.9
--------------------------------	--------------------------------------	----------------------



CATEGORY	A	B	C	D
LPV DA	500-1	311 (400-1)	NA	
LNAV/VNAV DA	500-1	311 (400-1)	NA	
LNAV MDA	720-1	531 (600-1)	NA	

SC-1, 22 FEB 2024 to 21 MAR 2024

SC-1, 22 FEB 2024 to 21 MAR 2024

WAAS CH 45644 W36A	APP CRS 002°	Rwy Idg 3205 TDZE 189 Apt Elev 189
--	------------------------	---

RNAV (GPS) RWY 36

DEWITT MUNI/WHITCOMB FLD (5M1)

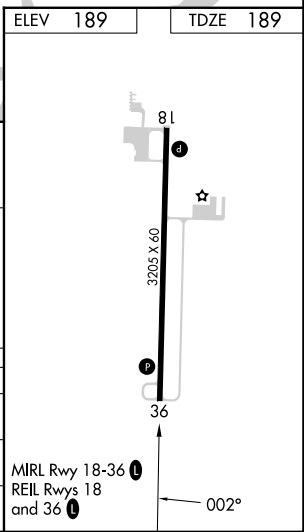
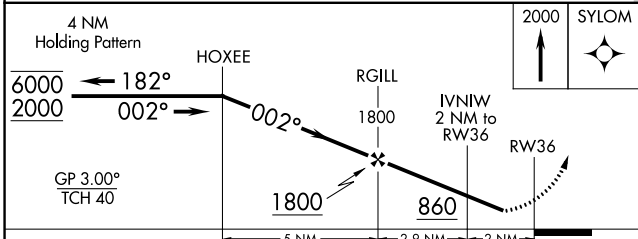
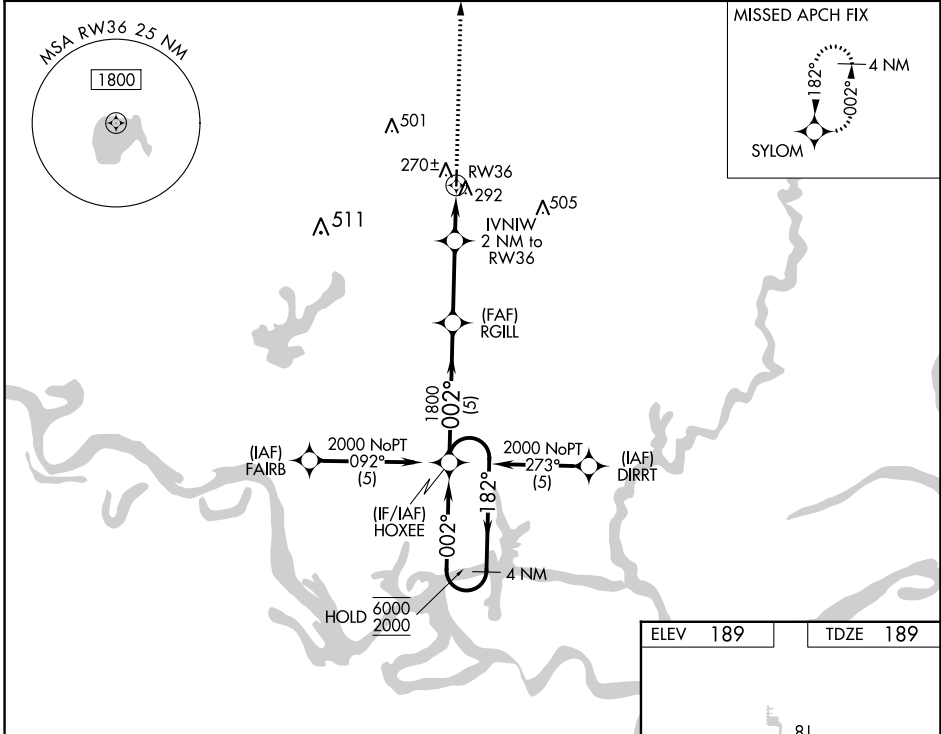
RNP APCH - GPS.

⚠ Rwy 36 helicopter visibility reduction below 3/4 SM NA. Baro-VNAV NA. Use Stuttgart altimeter setting; when not received, use Pine Bluff altimeter setting and increase LPV DA to 515 feet, LNAV/VNAV DA to 515 feet, and increase all MDAs 20 feet.

⚠ NA

MISSED APPROACH: Climb to 2000 direct SYLOM and hold.

SGT AWOS-3PT 119.025	MEMPHIS CENTER 135.3 335.8	CTAF 122.90
--------------------------------	--------------------------------------	-----------------------



CATEGORY		A	B	C	D
LPV DA		500-1	311 (400-1)		NA
LNAV/VNAV DA		500-1	311 (400-1)		NA
LNAV MDA		620-1	431 (500-1)		NA

SC-1, 22 FEB 2024 to 21 MAR 2024

SC-1, 22 FEB 2024 to 21 MAR 2024