

BOERNE STAGE AIRFIELD (5C1)
SAN ANTONIO, TEXAS

YODUH ONE DEPARTURE (RNAV)

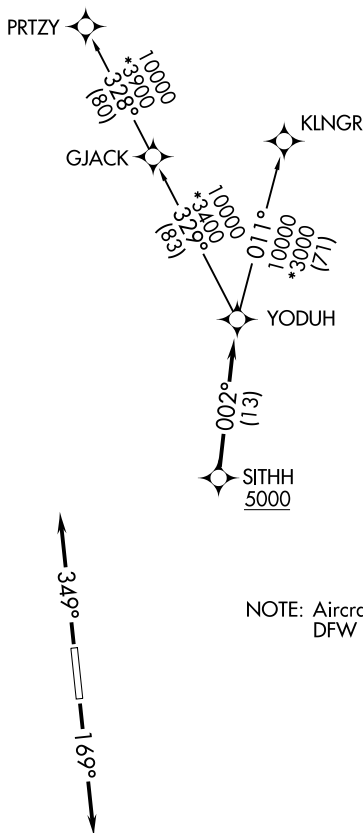
SAN ANTONIO, TEXAS

RNAV 1 - DME/DME IRU or GPS.

**TOP ALTITUDE:
ASSIGNED BY ATC**

SAN ANTONIO DEP CON
125.1 307.0

RADAR required.

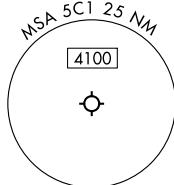


TAKEOFF MINIMUMS

Rwy 17: Standard with minimum climb
of 210'/NM to 2200.

Rwy 35: Standard with minimum climb
of 250'/NM to 3800.

NOTE: Aircraft destined for airports north/northeast of DFW terminal area must file the KLNGR Transition.



NOTE: Chart not to scale.



DEPARTURE ROUTE DESCRIPTION

TAKEOFF RUNWAY 17: Climb on heading 169° or as assigned by ATC, for vectors to SITHH, thence . . .

TAKEOFF RUNWAY 35: Climb on heading 349° or as assigned by ATC, for vectors to SITHH, thence . . .

... on track 002° to YODUH, then on Transition. Maintain ATC assigned altitude.

KLNGR TRANSITION (YODUH1.KLNGR)

PRTZY TRANSITION (YODUH1.PRTZY)

YODUH ONE DEPARTURE (RNAV)

SAN ANTONIO, TEXAS
BOERNE STAGE AIRFIELD (5C1)

(YODUH1.YODUH) 25JAN24

SC-3, 22 FEB 2024 to 21 MAR 2024