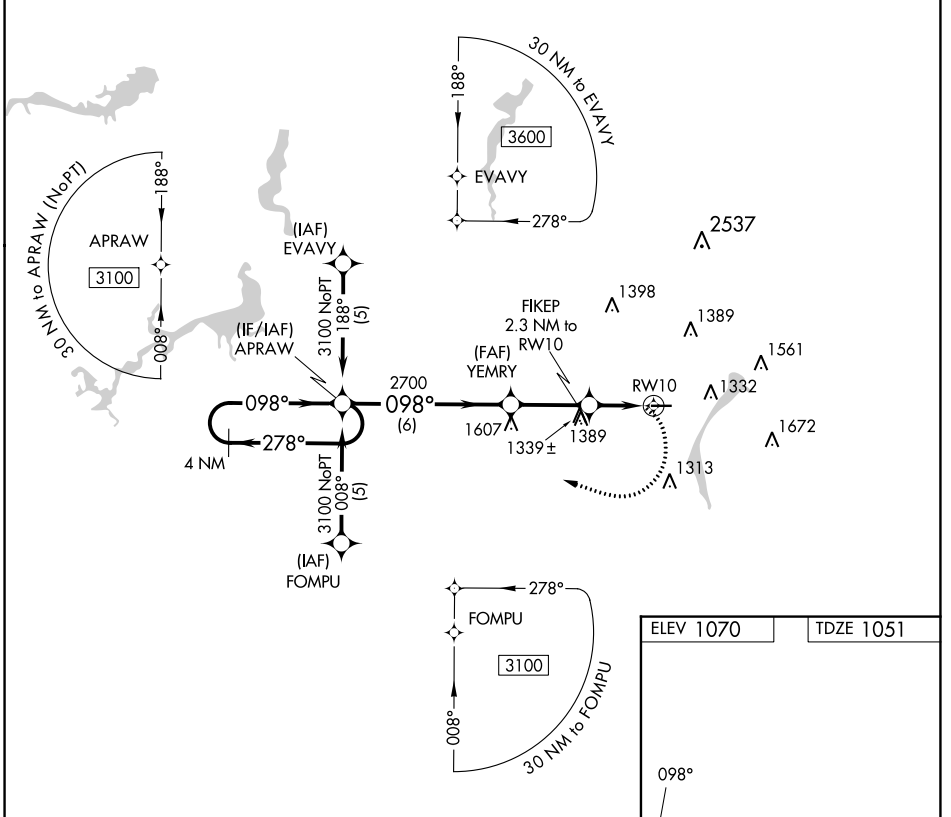


APP CRS	Rwy Idg	<b>3664</b>
<b>098°</b>	TDZE	<b>1051</b>
	Apt Elev	<b>1070</b>

# RNAV (GPS) RWY 10

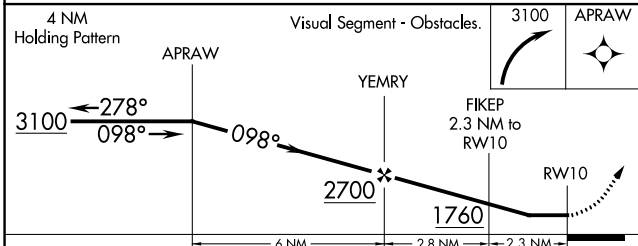
YOUNGSTOWN ELSER METRO (4G4)

RNP APCH.		MISSED APPROACH: Climbing right turn to 3100 direct APRAW and hold.
<p><b>▽</b> Rwy 10 helicopter visibility reduction below 1 SM NA. Obtain local altimeter setting on CTAF; when not received, use New Castle altimeter setting and increase all MDA 40 feet. Procedure NA at night.</p> <p><b>▲</b> NA</p>		
CLEVELAND APP CON *	CLNC DEL	UNICOM
<b>125.5 371.875</b>	<b>119.25</b>	<b>123.05</b> (CTAF)



EC-2, 22 FEB 2024 to 21 MAR 2024

EC-2, 22 FEB 2024 to 21 MAR 2024



ELEV 1070	TDZE 1051
-----------	-----------

Detailed view of the final approach segment. It shows the 1.4% glide slope starting at 1760 feet. Obstacles are shown with their MSL altitudes: 4012 X 50, 1398, 1389, 1561, 1332, 1672, and 1313. The runway (RWY 10) is shown with its 4012 X 50 dimensions.

CATEGORY	A	B	C	D
LNAV MDA	1660-1	609 (600-1)	NA	

MIRL Rwy 10-28  
REIL Rwy 10 and 28