

APP CRS 013°
Rwy Idg 4041
TDZE 273
Apt Elev 273

RNAV (GPS) RWY 2

TICONDEROGA MUNI (4B6)

RNP APCH.

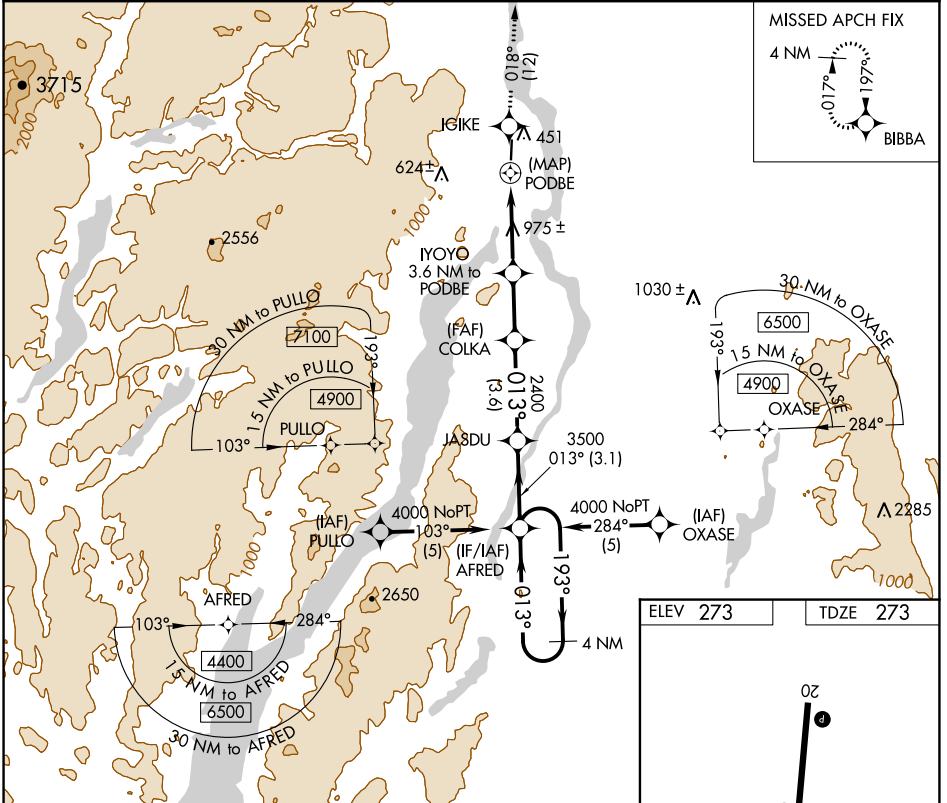


Use Burlington altimeter setting. Procedure NA at night.
Rwy 2 helicopter visibility reduction below 1 SM NA.

MISSED APPROACH: Climb to 4000 direct IGIKE and on track 018° to BIBBA and hold.

BOSTON CENTER
135.7 282.2

UNICOM
122.8 (CTAF) 0

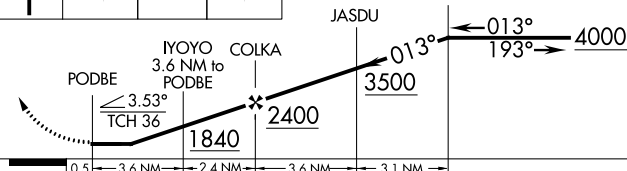


NE-2, 22 FEB 2024 to 21 MAR 2024

NE-2, 22 FEB 2024 to 21 MAR 2024

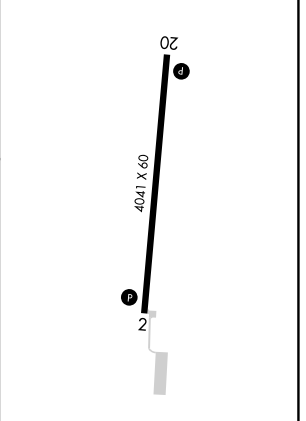


VGSi and descent angles not coincident
(VGSi Angle 3.00/TCH 46).
4 NM Holding Pattern



CATEGORY	A	B	C	D
LNAV MDA	1520-1¼ 1247 (1300-1¼)	1520-1½ 1247 (1300-1½)	NA	NA

ELEV 273 TDZE 273



MIRL Rwy 2-20 0
REIL Rwy 2 and 20 0

WAAS CH 53716 W20A	APP CRS 197°	Rwy Idg TDZE Apt Elev	4041 271 273
--	------------------------	-----------------------------	---

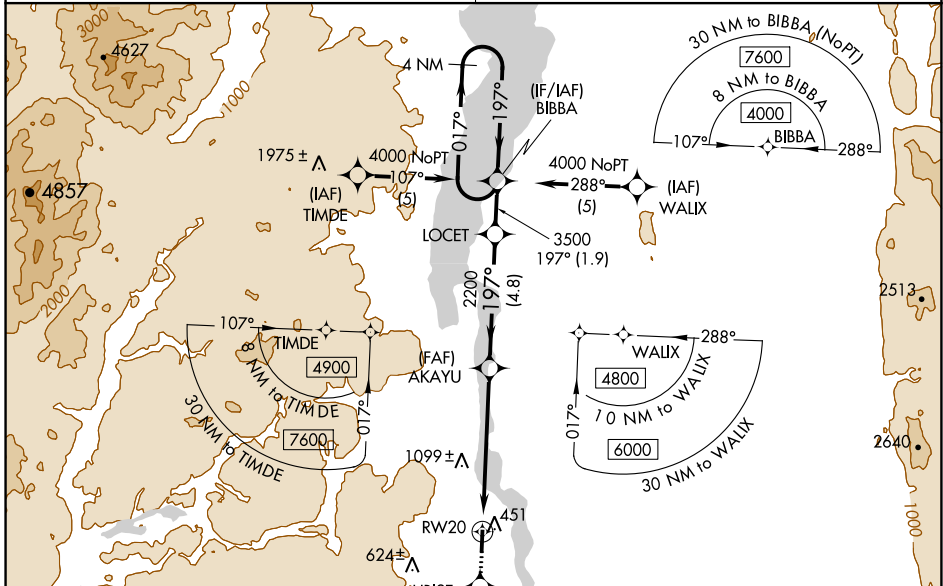
RNAV (GPS) RWY 20

TICONDEROGA MUNI (4B6)

NA DME/DME RNP-0.3 NA. Use Burlington altimeter setting. Helicopter visibility reduction below 1 SM NA. Procedure NA at night.

MISSED APPROACH: Climb to 4000 direct UBISE and on track 193° to AFRED and hold, continue climb-in-hold to 4000.

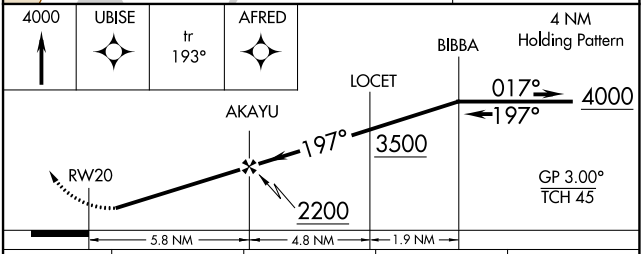
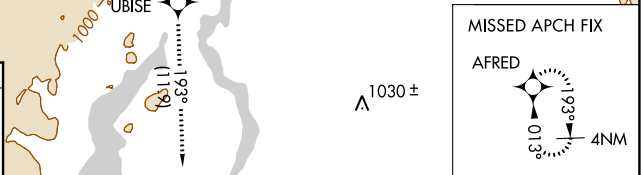
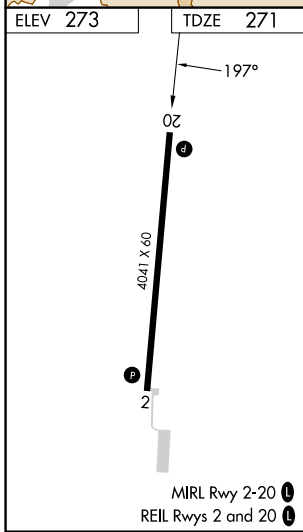
BOSTON CENTER 135.7 282.2	UNICOM 122.8 (CTAF) 0
--	--



NE-2, 22 FEB 2024 to 21 MAR 2024

NE-2, 22 FEB 2024 to 21 MAR 2024

ELEV 273	TDZE 271
----------	----------



CATEGORY	A	B	C	D
LPV DA	666-1½	395 (400-1½)		NA
LNAV MDA	1420-1¼ 1149 (1200-1¼)	1420-1½ 1149 (1200-1½)		NA
CIRCLING	1420-1¼ 1147 (1200-1¼)	1420-1½ 1147 (1200-1½)		NA