

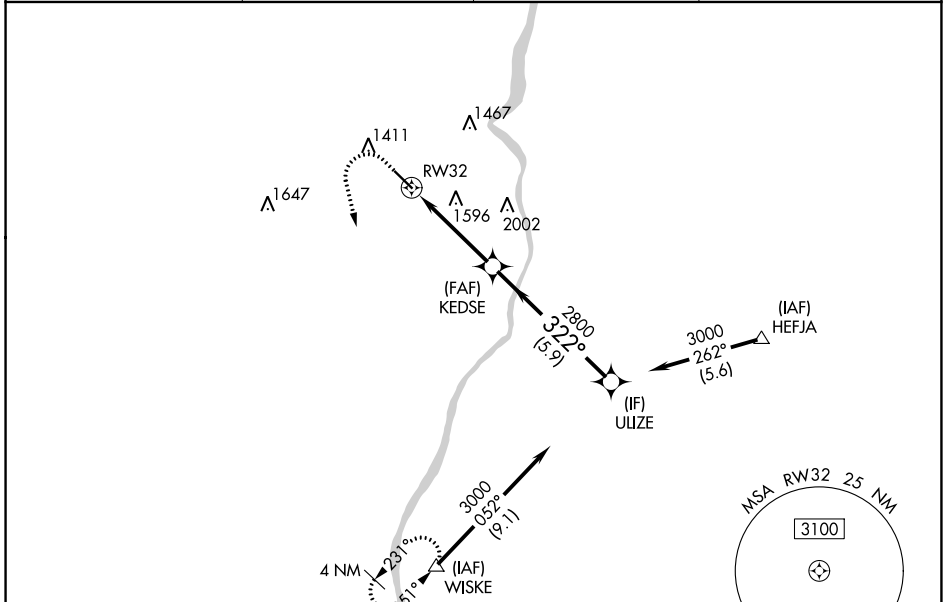
WAAS CH <b>58339</b> <b>W32A</b>	APP CRS <b>322°</b>	Rwy Idg TDZE Apt Elev	<b>5001</b> <b>1192</b> <b>1198</b>
--	------------------------	-----------------------------	---

# RNAV (GPS) RWY 32

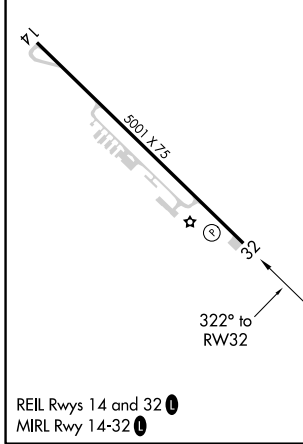
GEARY A BATES/JEFFERSON COUNTY AIRPARK (2G2)

RNP APCH.	<p>MISSED APPROACH: Climb to 2000 then climbing left turn to 3100 direct WISKE and hold.</p>
<p><b>▽</b> Rwy 32 helicopter visibility reduction below 3/4 SM NA. <b>▲</b> Baro-VNAV NA when using Wheeling altimeter setting. For uncompensated Baro-VNAV systems, LNAV/VNAV NA below -17°C or above 54°C. When local altimeter not received, use Wheeling altimeter setting.</p>	

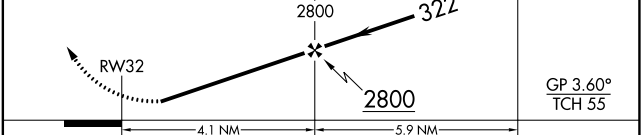
AWOS-3 <b>121.625</b>	HLG ASOS <b>127.375</b>	PITTSBURGH APP CON <b>124.75 338.2</b>	UNICOM <b>122.8 (CTAF) ①</b>
--------------------------	----------------------------	---	---------------------------------



ELEV 1198	TDZE 1192
-----------	-----------



2000	3100	WISKE ▲	VGSI and RNAV glidepath not coincident (VGSI Angle 3.60/TCH 41).	ULIZE
------	------	------------	--	-------



CATEGORY	A	B	C	D
LPV DA	1519-1		327 (400-1)	NA
LNAV/VNAV DA	1972-2 1/2		780 (800-2 1/2)	NA
LNAV MDA	1880-1	688 (700-1)		1880-2 688 (700-2)
<b>C</b> CIRCLING	1880-1 682 (700-1)	1980-1 782 (800-1)	1980-2 1/4 782 (800-2 1/4)	

STUEBENVILLE, OHIO  
Amdt 1C 27JAN22

GEARY A BATES/JEFFERSON COUNTY AIRPARK (2G2)  
40°22'N-80°42'W

# RNAV (GPS) RWY 32

EC-2, 22 FEB 2024 to 21 MAR 2024

EC-2, 22 FEB 2024 to 21 MAR 2024