

VOR/DME HYK <b>112.6</b> Chan <b>73</b>	APP CRS <b>006°</b>	Rwy Idg TDZE <b>940</b> Apt Elev <b>948</b>
---	------------------------	---

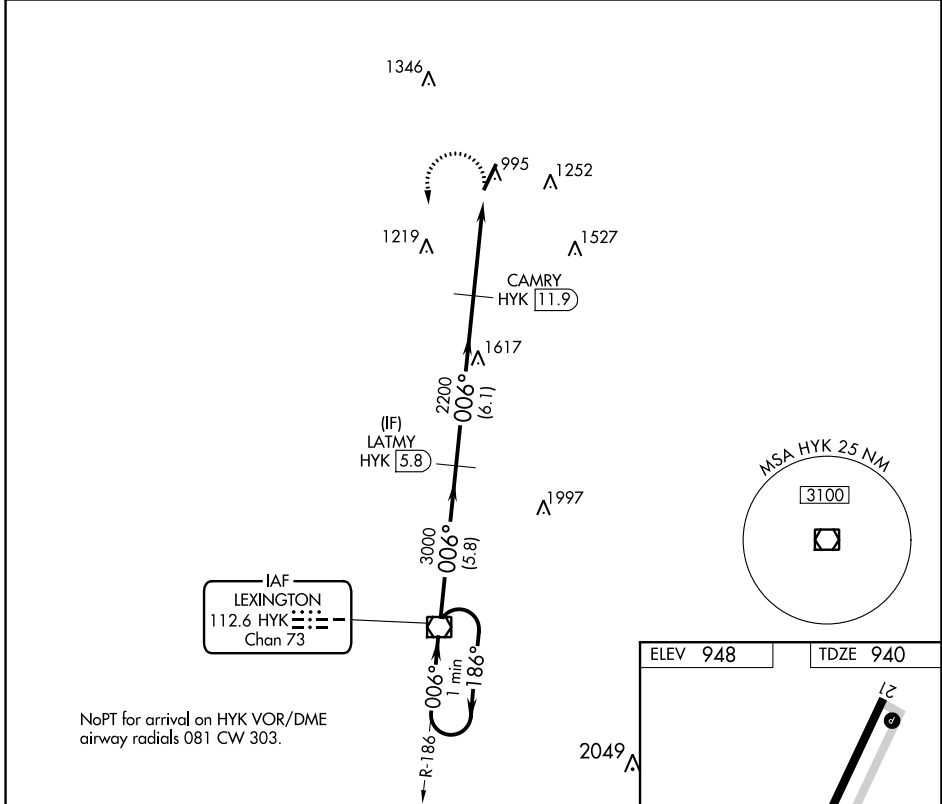
# VOR RWY 3

GEORGETOWN-SCOTT COUNTY RGNL (27K)

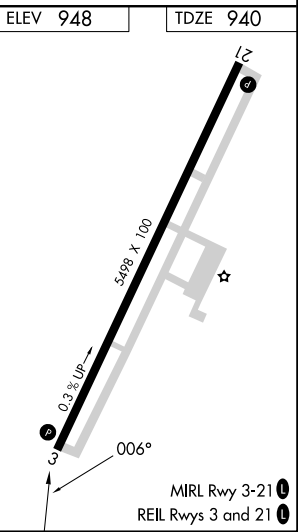
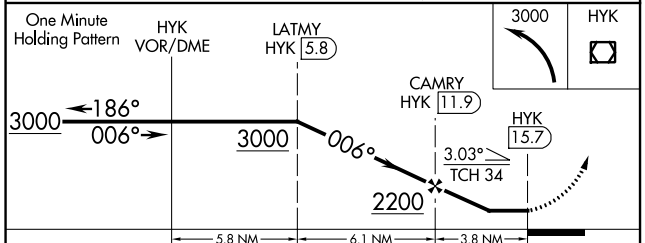
**▼** DME required.  
**▲ NA** When local altimeter setting not received, use Lexington altimeter setting and increase all MDA 40 feet; increase Circling Cat D visibility ¼ mile.

**MISSED APPROACH:** Climbing left turn to 3000 direct HYK VOR/DME and hold.

AWOS-3 <b>119.975</b>	LEXINGTON APP CON <b>120.15 259.3</b> (040°-220°) <b>120.75 298.9</b> (221°-039°)	CLNC DEL <b>127.425</b>	UNICOM <b>123.0</b> (CTAF) <b>0</b>
--------------------------	--	----------------------------	--



NoPT for arrival on HYK VOR/DME airway radials 081 CW 303.



CATEGORY	A	B	C	D
S-3	1480-1 540 (600-1)		1480-1½ 540 (600-1½)	1480-1¾ 540 (600-1¾)
CIRCLING	1480-1 532 (600-1)		1560-1¾ 612 (700-1¾)	1660-2¼ 712 (800-2¼)

SE-1, 22 FEB 2024 to 21 MAR 2024

SE-1, 22 FEB 2024 to 21 MAR 2024