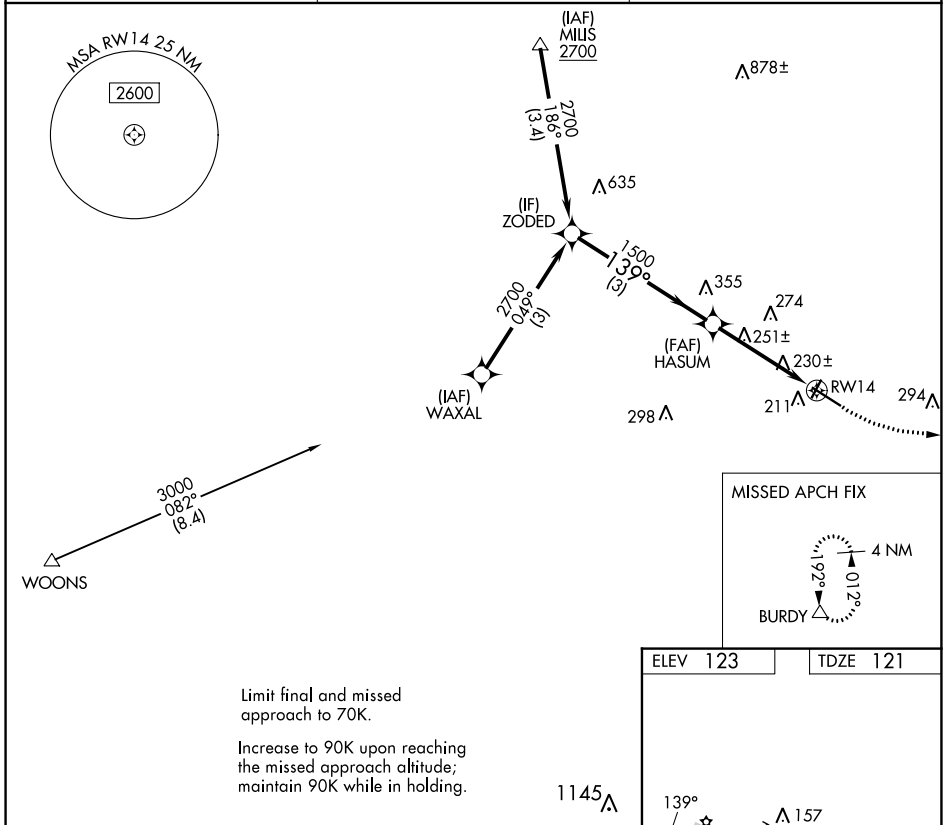


WAAS CH <b>50444</b> <b>W14B</b>	APP CRS <b>139°</b>	Rwy Idg TDZE <b>121</b> Apt Elev <b>123</b>	<b>2991</b>
--	------------------------	---	-------------

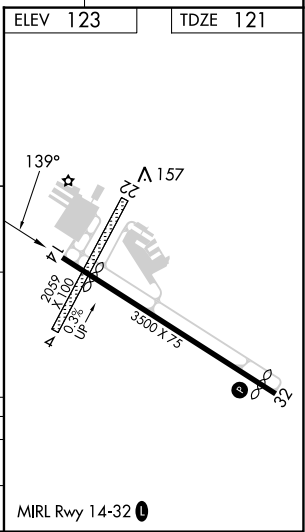
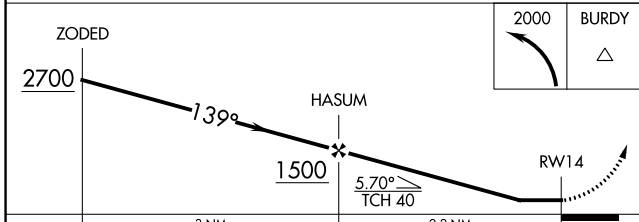
# COPTER RNAV (GPS) Y RWY 14

MANSFIELD MUNI (1B9)

RNP APCH - GPS.		MISSED APPROACH: Climbing left turn to 2000 direct BURDY and hold.
<p>Procedure NA at night. Use Taunton altimeter setting.</p>		
TAN ASOS <b>132.675</b>	BOSTON APP CON <b>124.1</b>	UNICOM <b>123.0 (CTAF)</b>



Limit final and missed approach to 70K.  
Increase to 90K upon reaching the missed approach altitude; maintain 90K while in holding.



CATEGORY	COPTER	
LP MDA	520-1	399 (400-1)
LNAV MDA	580-1	459 (500-1)

# COPTER RNAV (GPS) Y RWY 14

NE-1, 22 FEB 2024 to 21 MAR 2024

NE-1, 22 FEB 2024 to 21 MAR 2024