

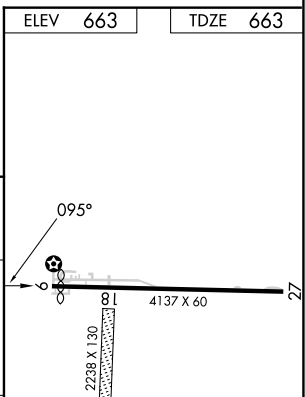
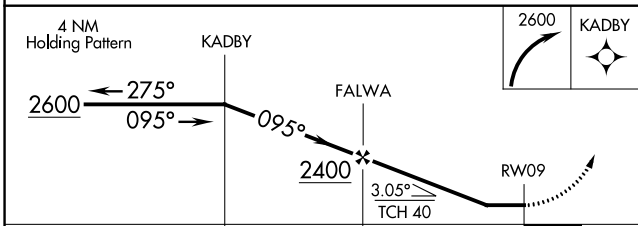
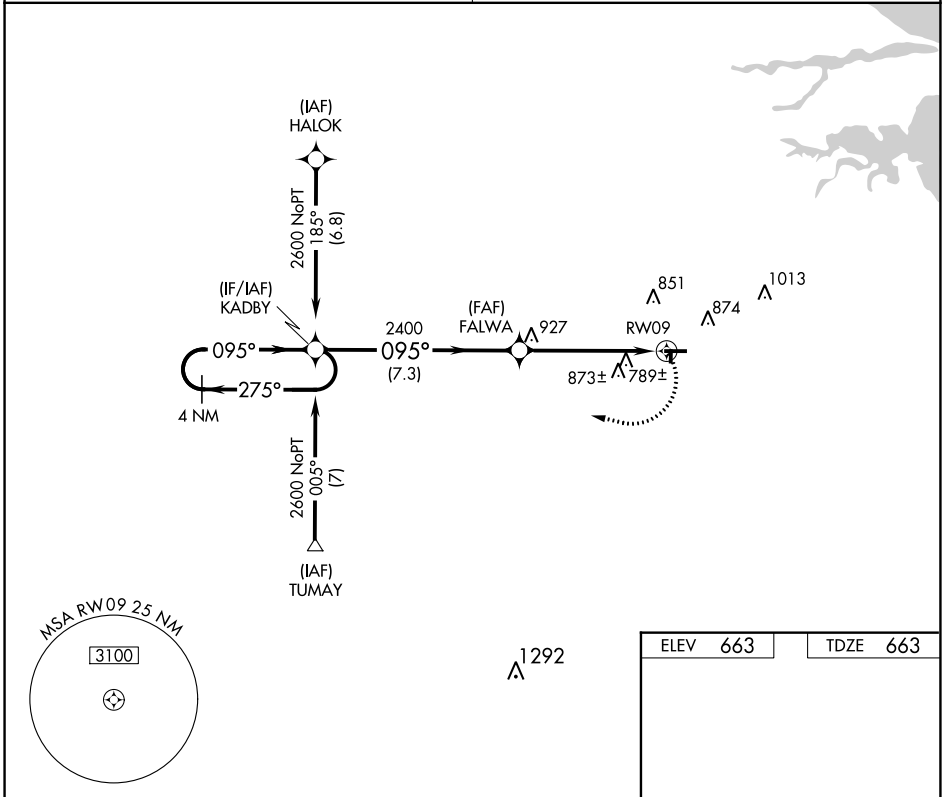
APP CRS	Rwy Idg	4011
095°	TDZE	663
	Apt Elev	663

RNAV (GPS) RWY 9

FREMONT (14G)

RNP APCH.	MISSED APPROACH: Climbing right turn to 2600 direct KADBY and hold.
<p>Procedure NA at night. Use Sandusky County Rgnl altimeter setting; when not received use Toledo Executive altimeter setting; increase all MDA 40 feet and LNAV Cat D and Circling Cat C and D visibility ¼ SM. Rwy 9 helicopter visibility reduction below 1 SM NA. Circling NA to Rwys 18-36.</p>	

TOLEDO APP CON	UNICOM
126.1 307.0	122.8 (CTAF) 0



CATEGORY	A	B	C	D
LNAV MDA	1080-1	417 (500-1)	1080-1¼	417 (500-1¼)
CIRCLING	1240-1	577 (600-1)	1240-1½	1380-2¼
			577 (600-1½)	717 (800-2¼)

LURL Rwy 9-27 **0**★

EC-2, 22 FEB 2024 to 21 MAR 2024

EC-2, 22 FEB 2024 to 21 MAR 2024