

WAAS CH 40031 W18A	APP CRS 183°	Rwy Idg TDZE Apt Elev	5001 286 286
--	------------------------	-----------------------------	---

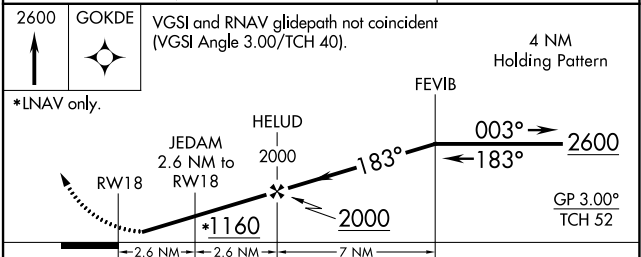
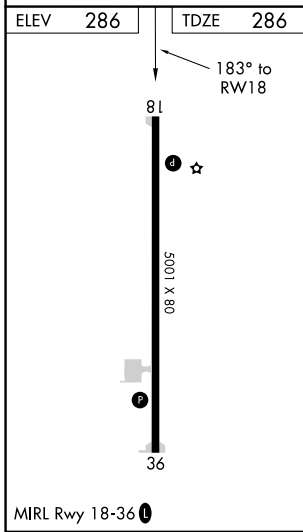
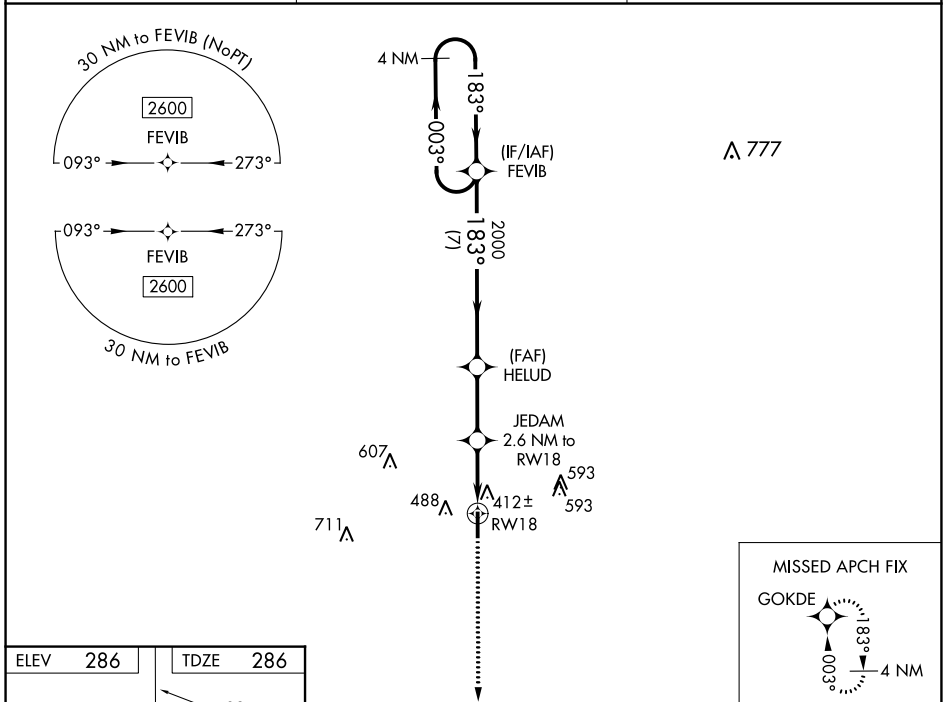
RNAV (GPS) RWY 18

ATMORE MUNI (ØR1)

▽ Baro-VNAV NA. Helicopter visibility reduction below 1 SM NA. DME/DME RNP-0.3 NA.
△ NA Use Brewton altimeter setting.

MISSED APPROACH: Climb to 2600 direct GOKDE and hold.

12J AWOS-3PT 119.325	PENSACOLA APP CON 127.35 291.625	UNICOM 122.8 (CTAF) 0
--------------------------------	--	---------------------------------



CATEGORY	A	B	C	D
LPV DA		613-1	327 (400-1)	
LNAV/VNAV DA		653-1	367 (400-1)	
LNAV MDA	740-1	454 (500-1)	740-1 ³ / ₈	454 (500-1 ³ / ₈)
C CIRCLING	880-1	594 (600-1)	980-2 694 (700-2)	1000-2 ¹ / ₄ 714 (800-2 ¹ / ₄)

WAAS CH 61141 W36A	APP CRS 003°	Rwy Idg TDZE Apt Elev	5001 286 286
--	------------------------	-----------------------------	---

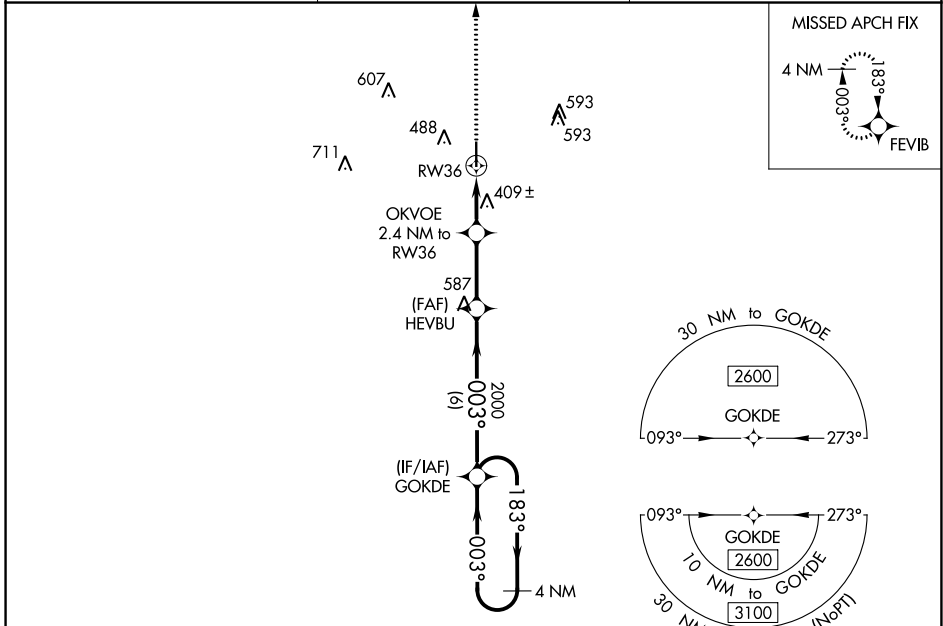
RNAV (GPS) RWY 36

ATMORE MUNI (ØR1)

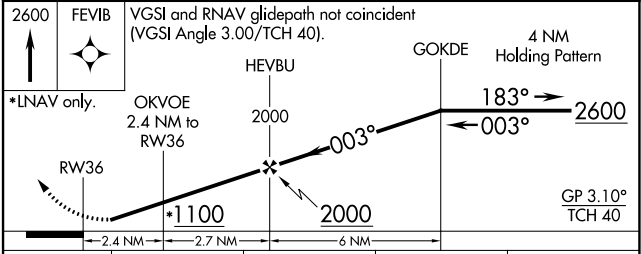
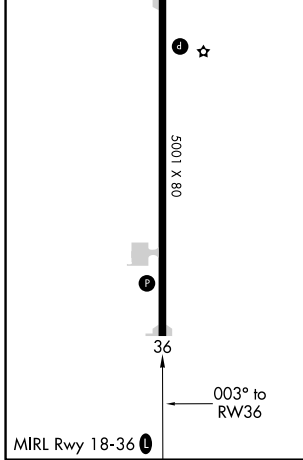
Baro-VNAV NA.
Helicopter visibility reduction below ¾ SM NA.
DME/DME RNP-0.3 NA. Use Brevton altimeter setting.

MISSED APPROACH: Climb to 2600 direct FEVIB and hold.

12J AWOS-3PT 119.325	PENSACOLA APP CON 127.35 291.625	UNICOM 122.8 (CTAF) Ø
--------------------------------	--	---------------------------------



ELEV 286	TDZE 286
-----------------	-----------------



CATEGORY	A	B	C	D
LPV DA		641-1	355 (400-1)	
LNAV/VNAV DA		613-1	327 (400-1)	
LNAV MDA	740-1	454 (500-1)	740-1 ³ / ₈	454 (500-1 ³ / ₈)
C CIRCLING	880-1	594 (600-1)	980-2 694 (700-2)	1000-2 ¹ / ₄ 714 (800-2 ¹ / ₄)

SE-4, 22 FEB 2024 to 21 MAR 2024

SE-4, 22 FEB 2024 to 21 MAR 2024