

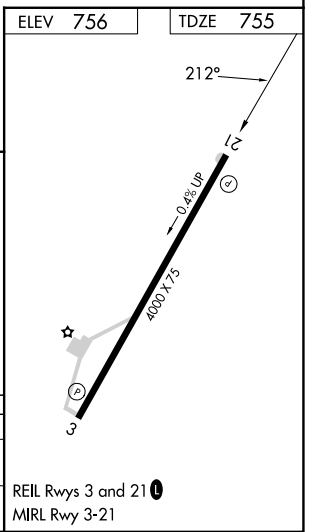
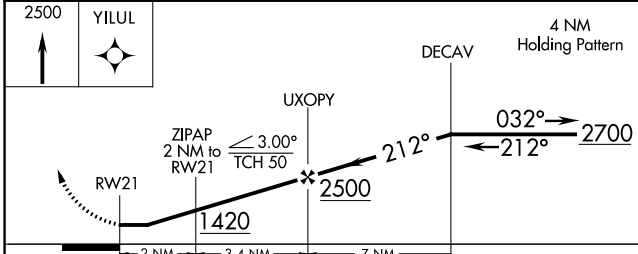
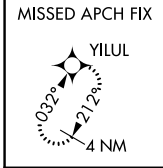
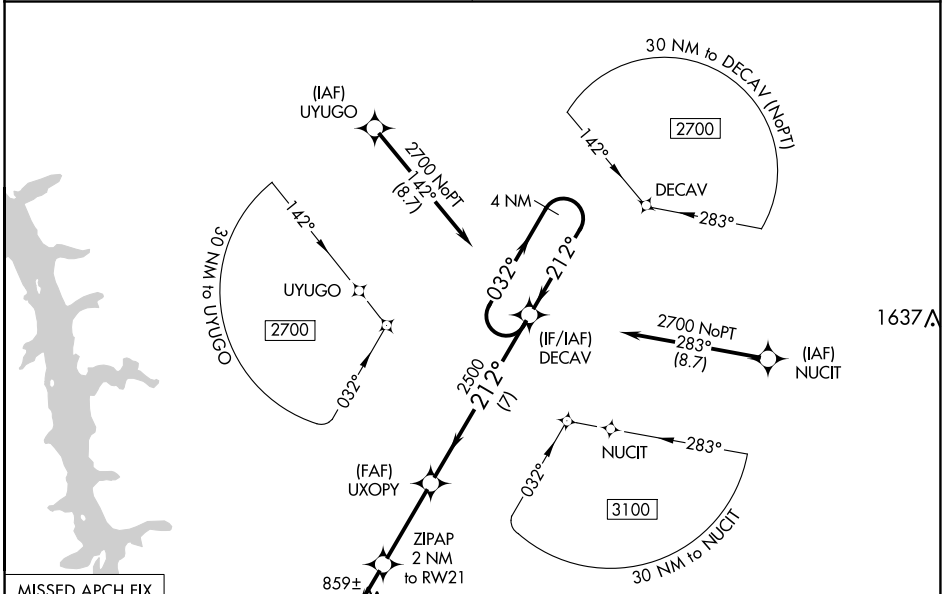
WAAS CH 97422 W21A	APP CRS 212°	Rwy Idg TDZE Apt Elev	4000 755 756
--	------------------------	-----------------------------	---

RNAV (GPS) RWY 21

HUMPHREYS COUNTY (ØM5)

RNP APCH.	<p>When local altimeter setting not received, use Nashville Intl altimeter setting: increase all MDA 160 feet and visibility Cat C and D ½ SM. Procedure NA at night. Rwy 21 helicopter visibility reduction below 1 SM NA.</p>	MISSED APPROACH: Climb to 2500 direct YILUL and hold.
-----------	---	---

MEMPHIS CENTER 125.85 379.25	UNICOM 122.8 (CTAF) 0
--	---------------------------------



CATEGORY	A	B	C	D
LP MDA	1120-1		365 (400-1)	
LNAV MDA	1140-1	385 (400-1)	1140-1 1/8	385 (400-1 1/8)

REIL Rws 3 and 21
MIRL Rwy 3-21

SE-1, 22 FEB 2024 to 21 MAR 2024

SE-1, 22 FEB 2024 to 21 MAR 2024

WAAS CH 90222 W03A	APP CRS 032°	Rwy Idg TDZE Apt Elev	4000 756 756
--	------------------------	-----------------------------	---

RNAV (GPS) RWY 3

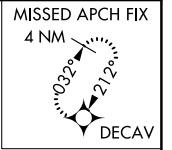
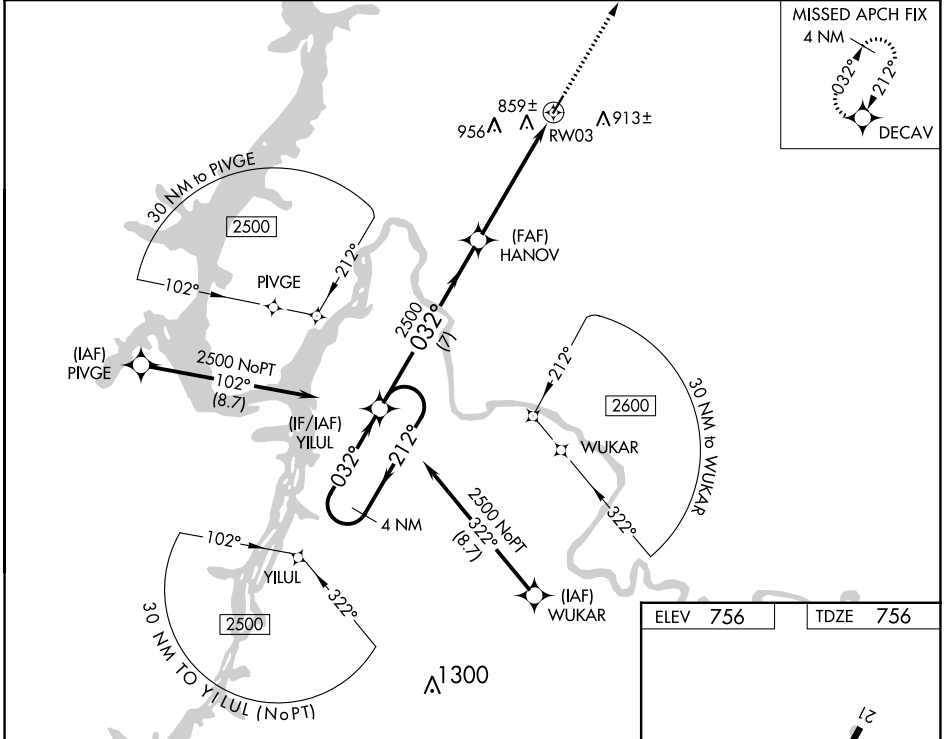
HUMPHREYS COUNTY (ØM5)

RNP APCH.

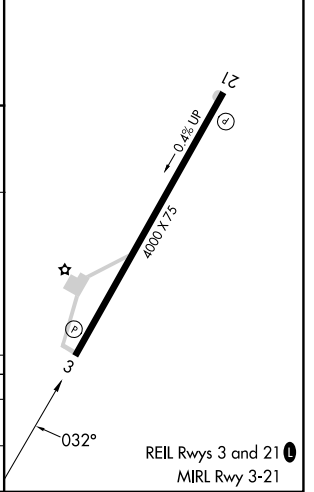
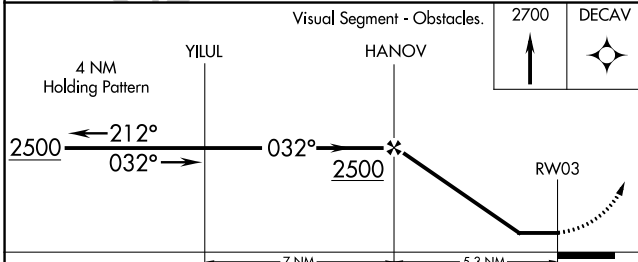
▽ When local altimeter setting not received, use Nashville Intl altimeter setting and increase all MDA 160 feet; increase LP Cat C and D visibility 3/8 mile, LNAV Cat C and D visibility 1/2 mile. Procedure NA at night. Rwy 3 helicopter visibility reduction below 1 SM NA.

△NA MISSED APPROACH: Climb to 2700 direct DECAV and hold.

MEMPHIS CENTER 125.85 379.25	UNICOM 122.8 (CTAF) 0
--	---------------------------------



ELEV 756	TDZE 756
----------	----------



CATEGORY	A	B	C	D
LP MDA		1100-1	344 (400-1)	
LNAV MDA		1120-1	364 (400-1)	

SE-1, 22 FEB 2024 to 21 MAR 2024

SE-1, 22 FEB 2024 to 21 MAR 2024